

BRUNCH

TOAST WITH BUTTER AND CONDIMENTS

Sourdough (856kJ)	7
Gluten Free (856kJ)	8
Fruit Loaf with Honey (2010kJ)	8

Served with strawberry jam (150kJ) / peanut butter (273kJ) / Vegemite (35kJ) / **Add extra condiment +0.5**

EGGS AS YOU LIKE ^v ^{GFOR} 14

Served on sourdough toast (see extras)
Poached (1540kJ) / Scrambled (2000kJ) / Fried (2090kJ)

BREKKIE BURGER 16

Bacon, fried egg, hash brown, lettuce, homemade tomato relish, tomato and aioli on a soft milk bun (2790kJ)

Swap bacon to grilled halloumi cheese upon request (2740kJ)

Add cheese (+276kJ) +1 / Add avocado (+994kJ) +2 /

Wrap option available

ULTIMATE BREAKFAST WRAP 19

Grilled chorizo, scrambled eggs, hash brown, lettuce, tomato salsa, homemade spicy mayo, pickle, mozzarella cheese, wrapped in a spinach tortilla (2460kJ)

Swap Chorizo with Halloumi ^v

OMELETTE ^v ^{GFOR} 20

Roasted mushrooms, braised tomato, parsley, mozzarella with toasted bread (2250kJ)

Add ham (+453kJ) +4 / Add chicken (+718kJ) +7 /

Add smoked salmon (+561kJ) +7

THREE CHEESE OMELETTE ^v 22

Parmesan cheese, cheddar cheese, mozzarella cheese, coriander, onion, braised eggplant, tomato salsa, toasted focaccia (2450kJ)

CRUSHED AVOCADO ON TOAST ^v 22

Slow roasted cherry tomato, parsley, whipped Persian fetta, chilli flake, pickled eschalots, balsamic glaze, poached eggs, toasted sourdough (2330kJ)

TURKISH EGGS 22

Grilled pork chorizo, slow roasted cherry tomato, poached eggs, lemon & dill labneh, Aleppo butter, toasted focaccia (3530kJ)

CORN FRITTERS ^v 22

Tempura corn fritters, tomato salsa, tomato relish, poached eggs (1480kJ)

MUSHROOM SCRAMBLED EGGS ON TOAST ^v 22

Sauteed mixed mushroom, asparagus, whipped Persian fetta, caramelised onion & mushroom relish, parmesan snow and shiitake mushroom XO on a toasted sourdough (3540kJ)

MORE MENUS ON THE BACK >>

^v vegetarian ^{GF} gluten free ^{GFOR} gluten free on request • The average adult daily energy intake is 8700kJ

• Please notify staff of food allergies • Sorry, we can't remove or swap ingredients • 15% public holiday surcharge • Halal Chicken

CHILLI SCRAMBLED EGGS ON CRUMPET ^v 22

Slow braised eggplant relish, chilli oil, pan roasted tomato, parsley, grilled halloumi, toasted coconut, soft herbs, toasted sourdough crumpet (2860kJ)

TRUFFLE MUSHROOM BRUSCHETTA ^v 22

Mushrooms, avocado, parsley, eschalots, garlic, thyme, truffle butter, whipped Persian fetta, fried egg, chilli oil, on a toasted focaccia (2690kJ)

EGGS BENEDICT 25

Poached eggs, crushed avo, sauteed spinach, hollandaise, toasted sourdough crumpet, fine herbs

Choice of Salmon (2630kJ) / Bacon (3370kJ) / Halloumi ^v (3260kJ)

BIG BREAKFAST 26

Two eggs your way, grilled pork chorizo, bacon, hash browns, crushed avo and roasted mushrooms with toasted sourdough (4440kJ)

LEAF BREKKIE ^v 26

Two poached eggs, grilled halloumi, hash browns, mushrooms, Sauteed spinach, crushed avocado and roasted tomato with toasted sourdough (3530kJ)

BELGIAN WAFFLE ^v 22

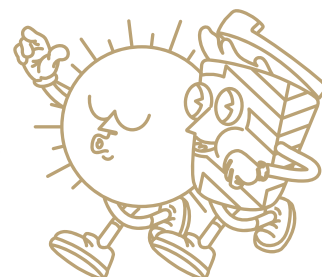
Seasonal berries, caramelised nuts, strawberries & rhubarb compote, whipped vanilla mascarpone, vanilla ice cream, Belgian chocolate sauce (4730kJ)

Add extra ice cream (+645kJ) +3

EXTRAS

AIOLI SAUCE (414KJ) / CHILLI OIL (287KJ)	1
HOLLANDAISE SAUCE (414KJ) / HASH BROWN (553KJ)	3
POACHED EGG (345KJ)	3.5
SAUTEED SPINACH (251KJ) / MUSHROOMS (160KJ) / AVOCADO (994KJ) / HAM (453KJ)	4
GRILLED BACON (1310KJ) / PORK CHORIZO (1310KJ) / GRILLED HALLOUMI (722KJ)	6
GRILLED CHICKEN (718KJ) / SCRAMBLED EGGS (734KJ) / SMOKED SALMON (561KJ)	7
POTATO CHIPS (1192KJ)	8
SWEET POTATO CHIPS (809KJ)	11

LEAF CAFÉ & CO



BURGERS, SANDWICHES AND SALAD

TOASTIES

Cheese & Tomato V (1830kJ)	10
Ham & Cheese (2010kJ)	11
Ham Cheese & Tomato (2060kJ)	13
Grilled Chicken, Cheese & Avocado (3110kJ)	16

CHEESE MELTS

Mushroom & Tomato V (1560kJ)	14
Ham & Pineapple (1920kJ)	15
Chicken & Avocado (2580kJ)	16

B.L.A.T. ^{GFOR}

Bacon, lettuce, crushed avocado, tomato and homemade sweet chilli mayo, served on toasted focaccia (3530kJ) Swap bacon with halloumi V (3440kJ)	18
--	----

FAJITA CHICKEN & SALAD WRAP

Marinated fajita chicken, grilled peppers, onion, avocado, tomato salsa, baby cos, mozzarella cheese, and homemade spicy mayo (mild) in a spinach wrap (2410kJ)	19
---	----

GRILLED CHICKEN & MUSHROOM TOASTIE

Grilled chicken breast, English cheddar cheese, chives, truffle mayo, and caramelised onion & mushroom relish on toasted focaccia (3510kJ)	20
--	----

KOREAN FRIED CHICKEN SANDWICH

Crispy fried chicken, shredded lettuce, avocado, aioli, pickle, Gangjeong (sweet spicy) sauce, served on toasted focaccia, with a side of chips (4510kJ)	24
--	----

GRILLED BEEF CHEESEBURGER

25

Homemade beef patty, homemade tomato relish, lettuce, tomato, pickle, melted cheddar cheese, grilled bacon and special burger sauce served on a milk bun, with a side of chips (6140kJ)

CAESAR SALAD

20

Baby cos lettuce, poached egg, croutons, crispy grilled bacon, parmesan, Caesar dressing (2720kJ)

Add grilled chicken (+718kJ) +7

FOR THE LITTLE ONES

 available for 12 and under 😊

KID'S BREKKIE

12

Scrambled egg, hash brown and toast (1590kJ)

KID'S CHICKEN NUGGETS

12

With chips and tomato sauce (2650kJ)

KID'S PIKELETS

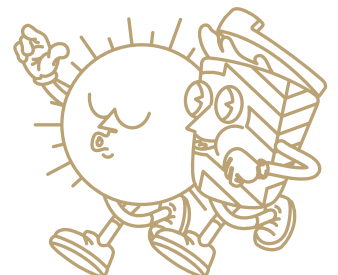
12

With seasonal fruits and ice cream (2160kJ)

KID'S WAFFLE

14

With ice cream, chocolate sauce, strawberries (2260kJ)



BREW BAR

COLD DRIP COFFEE | SINGLE O 7.5

A slow, four to six hour extracted coffee. Sweet, liquor-like flavour with low acidity. Sold in a bottle. Served on ice. (2kJ)

ESPRESSO | UPSIZE +0.8

Ristretto | Single O (2kJ) / Short Black | Single O (2kJ) 4.5

Long Black | Single O (4kJ) / Macchiato (61kJ) / 5.0

Piccolo (197kJ) / Flat White (451kJ) / Latte (541kJ) / Cappuccino (451kJ)

SPECIALTY | UPSIZE +0.8 5.2

Chai Latte (910kJ) / Taro Latte (1470kJ) /

Green Tea Latte (929kJ) / Red Velvet Latte (1530kJ)

BELGIAN HOT CHOCOLATE | UPSIZE +1.5 6.2

We use Belgian couverture chocolate, high-quality chocolate that contains a higher percentage of cocoa.

White (979kJ) / Milk (1250kJ) / Dark (1080kJ)

MOCHA | UPSIZE +1.5 6.2

We use Belgian couverture chocolate, high-quality chocolate that contains a higher percentage of cocoa.

White (937kJ) / Milk (933kJ) / Dark (924kJ)

BABYCINO (133kJ) 2

EXTRAS

Decaf (2kJ) / Extra Shot (2kJ) +0.6

Almond Milk (231kJ) / Soy Milk (361kJ) / +0.8

Oat Milk (413kJ)

FLAVOUR | Caramel (270kJ) / Hazelnut (274kJ) / +0.8

Vanilla (274kJ) / Mint (280kJ)

ORGANIC LOOSE LEAF TEA 5.5

Temperature controlled, brewed to perfection.

GOOD MORNING

Our luxurious take on English Breakfast Tea (2kJ)

EARL GREY BLUEFLOWER

Ceylon Orange Pekoe Black Tea infused with bergamot (2kJ)

GENMAICHA (KYOTO JAPAN)

Brothy Kyoto Green Tea with toasted rice (2kJ)

SILVER JASMINE (ZHEJIANG)

Silver Tipped Green Tea, infused with jasmine blossoms (2kJ)

DOUBLE MINT

Mint & spearmint, lavender and fennel seeds to aid digestion (2kJ)

LEMONGRASS GINGER

Lemongrass and ginger blend to restore minerals (2kJ)

CHAMOMILE LAVENDER

A floral bouquet with sweet honey notes that soothe (2kJ)

MASALA CHAI

Authentic Indian recipe of spices with Assam Tea base & honey (465kJ)

CHILLED BAR

ICED ESPRESSO

Iced Long Black (4kJ) / Iced Latte (1050kJ) 7.5

Iced Coffee (1450kJ)

Affogato (729kJ) 7.5

BLENDED

Coffee (1700kJ) 8.5

Chai Latte (910kJ) / Green Tea Latte (908kJ) / 8.8

Taro Latte (1020kJ) / Red Velvet Latte (1020kJ)

BLENDED CHOCOLATE 10

White (3020kJ) / Milk (2957kJ) / Dark (2900kJ)

BLENDED MOCHA 10

White (2110kJ) / Milk (2100kJ) / Dark (2080kJ)

HANDCRAFTED SODA 7

New Zealand Golden Kiwi & Mint (860kJ) / Lychee (712kJ) /

Cranberry & Lime (759kJ)

ORGANIC ICED TEA

BREAKFAST LEMON MINT 7.5

Ceylon orange pekoe tea with fresh lemon juice & mint (611kJ)

LEMONGRASS & GINGER 7.5

Caffeine-free cold tisane with fresh lemon zest (402kJ)

EGYPTIAN ICE 7.5

Liquid Turkish delight (439kJ)

COLD PRESSED JUICE 8.5

ORANGE

Straight orange juice (600kJ)

RED

Watermelon & strawberry (665kJ)

FRUITY SMOOTHIE 9

AÇAÍ ^{DF}

Açaí, guarana, banana (1525kJ)

PASSION TANGO ^{DF}

Pineapple, passionfruit, banana & mango (1330kJ)

SUMMER SUNSET ^{DF}

Pineapple, mango, strawberry & kiwi (1290kJ)

MILKSHAKE 7

Chocolate (1690kJ) / Vanilla (1540kJ) / Salted Caramel (1470kJ)

/ Strawberry (1550kJ) / or Banana (1290kJ)

WHEY Protein (502kJ) +2.5 / Make it a THICKSHAKE (1290kJ) +2.5

LEAF CAFÉ & CO

