

## BRUNCH

### EGGS AS YOU LIKE <sup>v GFOR</sup> 14

Served on sourdough toast (see extras)  
Poached (1540kJ) / Scrambled (2000kJ) / Fried (2090kJ)

### BREKKIE BURGER 17

Bacon, fried egg, hash brown, lettuce, homemade tomato relish, tomato and aioli on a soft milk bun (2790kJ)  
Swap bacon to grilled halloumi cheese upon request (2740kJ)  
Add cheese (+276kJ) +1 / Add avocado (+994kJ) +2 /  
Wrap option available

### EGG SALAD TOAST <sup>CHEF'S PICK</sup> 19

Cultured smoked umami spread, Japanese style egg salad, roe, chives on a toasted Shokupan (2940kJ)

### GRANOLA YOGURT BOWL <sup>v</sup> 19

Poached strawberries and rhubarb, homemade baked granola, Greek yogurt, berries (2600kJ)

### ULTIMATE BREAKFAST WRAP 21

Grilled pork chorizo patty, scrambled eggs, hash brown, lettuce, pickles, tomato salsa, spicy pineapple jalapeno relish, aioli, mozzarella cheese, wrapped in a spinach tortilla (3380kJ)

### OMELETTE <sup>v GFOR</sup> 21

Roasted mushrooms, braised tomato, parsley, mozzarella with toasted bread (2250kJ)  
Add ham (+453kJ) +4 / Add chicken (+718kJ) +7 /  
Add smoked salmon (+561kJ) +7

### TURKISH EGGS 22

Grilled pork chorizo, slow roasted cherry tomato, poached eggs, lemon & dill labneh, Aleppo butter, toasted focaccia (3530kJ)

### CRUSHED AVOCADO ON TOAST <sup>v</sup> 23

Slow roasted cherry tomato, parsley, whipped Persian fetta, homemade chilli oil, pickled eschalots, poached eggs, toasted sourdough (2330kJ)

### CHILLI SCRAMBLED EGGS ON CRUMPET <sup>v</sup> 24

Slow braised eggplant relish, chilli oil, pan roasted tomato, parsley, grilled halloumi, toasted coconut, soft herbs, toasted sourdough crumpet (2860kJ)

### TRUFFLE MUSHROOM OMELETTE <sup>v</sup> <sup>CHEF'S PICK</sup> 25

Mixed mushrooms, asparagus, parsley, eschalots, garlic, truffle butter, creamy mushroom sauce, chilli oil, parmesan snow, toasted focaccia (3230kJ)

### TEMPURA CORN FRITTERS <sup>v</sup> 24

Crispy tempura corn fritters, crushed avocado, tomato salsa, tomato relish, whipped Persian fetta, poached egg, soft herbs, parmesan snow (2840kJ)

### GRILLED HALLOUMI <sup>CHEF'S PICK</sup> BREAKFAST BOWL <sup>v</sup> 26

Grilled halloumi, roasted pumpkin, tomato salsa, crispy chickpeas, soft boiled egg, avocado, roasted sesame dressing, hummus, toasted sourdough (4300kJ)

### BREAKFAST GNOCCHI <sup>CHEF'S PICK</sup> 26

Homemade potato gnocchi, roasted tomato, pork chorizo, chilli, parsley, parmesan snow, poached egg (2810kJ)  
Swap the chorizo for chicken (2530kJ)

### LEAF BREKKIE <sup>v</sup> 26

Two poached eggs, grilled halloumi, hash browns, mushrooms, Sauteed spinach, crushed avocado and roasted tomato with toasted sourdough (3530kJ)

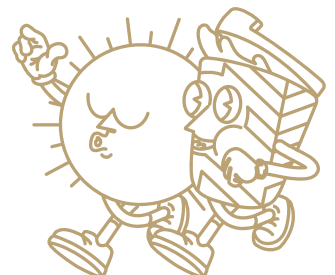
### BIG BREAKFAST 28

Two eggs your way, cultured smoked umami spread, grilled pork chorizo, bacon, hash browns, smoked umami potato croquettes, roasted mushrooms served with toasted sourdough  
Poached (4340kJ) / Scrambled (4440kJ) / Fried (4470kJ)

### EXTRAS

AIOLI SAUCE (414KJ) / CHILLI OIL (287KJ)	1
HOLLANDAISE SAUCE (414KJ) / HASH BROWN (553KJ)	3
POACHED EGG (345KJ) / CULTURED SMOKED UMAMI SPREAD (540KJ)	3.5
SAUTEED SPINACH (251KJ) / HAM (453KJ) / MUSHROOMS (160KJ) / AVOCADO (994KJ) / SMOKED UMAMI POTATO CROQUETTES - 2 PCS (590KJ)	4
GRILLED BACON (1310KJ) / PORK CHORIZO (1310KJ) / GRILLED HALLOUMI (722KJ)	6
GRILLED CHICKEN (718KJ) / SCRAMBLED EGGS (734KJ) / SMOKED SALMON (561KJ)	7
POTATO CHIPS (1192KJ)	9
SWEET POTATO CHIPS (809KJ)	12

LEAF CAFÉ & CO



## BURGER AND SANDWICHES

### TOASTIES

Cheese & Tomato V (1830kJ)	10
Ham & Cheese (2010kJ)	11
Ham Cheese & Tomato (2060kJ)	13
Grilled Chicken, Cheese & Avocado (3110kJ)	16

### CHICKEN SCHNITZEL WRAP 20

Panko crumbed chicken breast fillet, English cheddar cheese, lettuce, avocado, tomato, and sweet chilli mayo in a spinach wrap (3240kJ)

### KOREAN FRIED CHICKEN SANDWICH 24

Crispy fried chicken, shredded lettuce, avocado, aioli, pickle, Gangjeong (sweet spicy) sauce, served on toasted focaccia, with a side of chips (4510kJ)

### WAGYU BEEF MENCHI KATSU SANDO 26

Homemade wagyu beef menchi katsu, pickle, shredded lettuce, Kewpie mayo, tonkatsu sauce on a toasted Shokupan bread (3810kJ)


### CHORIZO & PRAWNS PIZZA SANDWICH 26

Grilled pork chorizo, sautéed prawns, garlic, eschalots, chilli, napolitana, parsley, mozzarella cheese, chimichurri (4380kJ)

### GRILLED BEEF CHEESEBURGER 25

Homemade beef patty, homemade tomato relish, lettuce, tomato, pickle, melted cheddar cheese, grilled bacon and special burger sauce served on a milk bun, with a side of chips (6140kJ)

### FOR THE LITTLE ONES

 available for 12 and under 😊

#### KID'S BREKKIE 12

Scrambled egg, hash brown and toast (1590kJ)

#### KID'S PIKELETS 12

With seasonal fruits and ice cream (2160kJ)

#### KID'S GRILLED CHICKEN BURGER 16

With lettuce, tomato, BBQ sauce and chips (3080kJ)

#### KID'S FISH & CHIPS 16

Battered flathead, chips and tomato sauce (2200kJ)

#### KID'S SPAGHETTI 18

With beef bolognese, parmesan cheese (1320kJ)

## MAINS, SALADS AND DESSERTS

### CHICKEN BOSCAIOLA SPAGHETTI 28

Marinated chicken, bacon, mushrooms, eschalots, garlic, and chives in a rich creamy sauce with parmesan snow (1930kJ)

### SPICY GARLIC PRAWN SPAGHETTI 32

Sauteed prawns, eschalots, garlic, chilli, roasted cherry tomato, white wine, napolitana, parsley, XO crumb (3300kJ)

### BEEF CHEEKS OMURICE 32

6-hour slow cooked beef cheek, served on top of a soft omelette, tomato and seasonal veggie fried rice, demi glace sauce (3510kJ)

### ROASTED CAULIFLOWER SALAD V 22

Roasted cauliflower & broccolini, avocado, edamame, almond flakes, asparagus, poached egg, nori cracker, tahini hummus (1380kJ)

Add chicken (+718kJ) + 7

### GRILLED CHICKEN HARVEST BOWL 26

Grilled marinated chicken fillet, boiled eggs, avocado, sweet harvest corn, tomato, red onion, Persian feta, charred broccolini, fresh parsley, creamy garlic dressing (3640kJ)

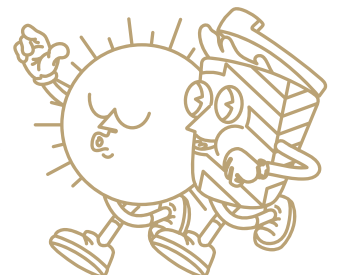
### BELGIAN CHOCOLATE & NUTELLA PANCAKE V 22

Banana, strawberries, whipped Nutella, vanilla ice cream, Belgian chocolate sauce (3870kJ)

Add extra ice cream (+645kJ) +3

### PISTACHIO FRENCH TOAST V 22

Whipped vanilla mascarpone, seasonal berries, pistachio brittle, vanilla ice cream, pistachio glaze (5200kJ)



## BREW BAR

### COLD DRIP COFFEE | SINGLE O 7.5

A slow, four to six hour extracted coffee. Sweet, liquor-like flavour with low acidity. Sold in a bottle. Served on ice. (2kJ)

### ESPRESSO | UPSIZE +0.8

Ristretto | Single O (2kJ) / Short Black | Single O (2kJ) 4.5

Long Black | Single O (4kJ) / Macchiato (61kJ) / Piccolo (197kJ) / Flat White (451kJ) / Latte (541kJ) / Cappuccino (451kJ) 5.0

### SPECIALTY | UPSIZE +0.8 5.2

Chai Latte (910kJ) / Taro Latte (1470kJ) / Green Tea Latte (929kJ) / Red Velvet Latte (1530kJ)

### BELGIAN HOT CHOCOLATE | UPSIZE +1.5 6.2

We use Belgian couverture chocolate, high-quality chocolate that contains a higher percentage of cocoa.

White (979kJ) / Milk (1250kJ) / Dark (1080kJ)

### MOCHA | UPSIZE +1.5 6.2

We use Belgian couverture chocolate, high-quality chocolate that contains a higher percentage of cocoa.

White (937kJ) / Milk (933kJ) / Dark (924kJ)

### BABYCINO (133kJ) 2

#### EXTRAS

Decaf (2kJ) / Extra Shot (2kJ) +0.6

Almond Milk (231kJ) / Soy Milk (361kJ) / Oat Milk (413kJ) +0.8

FLAVOUR | Caramel (270kJ) / Hazelnut (274kJ) / Vanilla (274kJ) / Mint (280kJ) +0.8

### ORGANIC LOOSE LEAF TEA 5.2

Temperature controlled, brewed to perfection.

### GOOD MORNING

Our luxurious take on English Breakfast Tea (2kJ)

### EARL GREY BLUEFLOWER

Ceylon Orange Pekoe Black Tea infused with bergamot (2kJ)

### GENMAICHA (KYOTO JAPAN)

Brothy Kyoto Green Tea with toasted rice (2kJ)

### SILVER JASMINE (ZHEJIANG)

Silver Tipped Green Tea, infused with jasmine blossoms (2kJ)

### DOUBLE MINT

Mint & spearmint, lavender and fennel seeds to aid digestion (2kJ)

### LEMONGRASS GINGER

Lemongrass and ginger blend to restore minerals (2kJ)

### CHAMOMILE LAVENDER

A floral bouquet with sweet honey notes that soothe (2kJ)

### MASALA CHAI

Authentic Indian recipe of spices with Assam Tea base & honey (465kJ)

## CHILLED BAR

### ICED ESPRESSO

Iced Long Black (4kJ) / Iced Latte (1050kJ) 6.6

Iced Coffee (1450kJ) 7.6

Affogato (729kJ) 7

### BLENDED 8.8

Coffee (1700kJ) / Chai Latte (910kJ) /

Green Tea Latte (908kJ) / Taro Latte (1020kJ) /

Red Velvet Latte (1020kJ)

### BLENDED CHOCOLATE 10

White (3020kJ) / Milk (2957kJ) / Dark (2900kJ)

### BLENDED MOCHA 10

White (2110kJ) / Milk (2100kJ) / Dark (2080kJ)

### HANDCRAFTED SODA 7

New Zealand Golden Kiwi & Mint (860kJ) / Lychee (712kJ) /

Cranberry & Lime (759kJ)

### KOMBUCHA & ORGANIC ICED TEA | 350ML

#### RUBY KOMBUCHA 7

Grapefruit and hibiscus (105kJ)

#### ZEST KOMBUCHA 7

Lemon and chrysanthemum (105kJ)

#### SUNNY MORNING 6.5

Ceylon Orange Pekoe Tea with fresh lemon juice & mint (428kJ)

#### HIBISCUS DAWN 6.5

Liquid Turkish delight (307kJ)

### COLD PRESSED JUICE | 350ML 8

#### STRAIGHT OJ

Freshly pressed orange juice (420kJ)

#### CLEAN & GREEN

Apple, pear, spinach & kale (581kJ)

#### MELLOWBERRY

Watermelon & strawberry (466kJ)

### FRUITY SMOOTHIE 9

#### PASSION TANGO <sup>DF</sup>

Pineapple, passionfruit, banana & mango (1330kJ)

#### SUMMER SUNSET <sup>DF</sup>

Pineapple, mango, strawberry & kiwi (1290kJ)

### PROTEIN SHAKE | WITH ALMOND OR OAT MILK 11.5

#### THE ENERGISER | 29G PROTEIN

Kiwi, spinach, avo, pineapple, coconut, banana, chia seed

Almond (1881kJ) / Oat (2069kJ)

#### BERRY BOOST | 32G PROTEIN

Acai, gurarana, banana, chia seed

Almond (2322kJ) / Oat (2510kJ)

### MILKSHAKE 7

Chocolate (1690kJ) / Vanilla (1540kJ) / Salted Caramel (1470kJ)

/ Strawberry (1550kJ) / or Banana (1290kJ)

WHEY Protein (502kJ) +2.5 / Make it a THICKSHAKE (1290kJ) +2.5