

BRUNCH

TOAST WITH BUTTER AND CONDIMENTS

| | |
|--------------------------------|---|
| Sourdough (856kJ) | 7 |
| Soy Linseed (1419kJ) | 7 |
| Gluten Free (856kJ) | 8 |
| Fruit Loaf with Honey (2010kJ) | 8 |

Served with strawberry jam (150kJ) / peanut butter (273kJ) / Vegemite (35kJ) / **Add extra condiment +1**

EGGS AS YOU LIKE ^{CHEF'S PICK} v GFOR 14

Served on sourdough toast (see extras)
Poached (1540kJ) / Scrambled (2000kJ) / Fried (2090kJ)

BREKKIE BURGER 17

Bacon, fried egg, hash brown, lettuce, homemade tomato relish, tomato and aioli on a soft milk bun (2790kJ)

Swap bacon to grilled halloumi cheese upon request (2740kJ)

Add cheese (+276kJ) +1 / Add avocado (+994kJ) +2 /

Wrap option available

EGG SALAD TOAST ^{CHEF'S PICK} 19

Cultured smoked umami spread, Japanese style egg salad, roe, chives on a toasted Shokupan (2940kJ)

ULTIMATE BREAKFAST WRAP 21

Grilled pork chorizo patty, scrambled eggs, hash brown, lettuce, pickles, tomato salsa, spicy pineapple jalapeno relish, aioli, mozzarella cheese, wrapped in a spinach tortilla (3380kJ)

CRUSHED AVOCADO ON TOAST ^v 23

Slow roasted cherry tomato, parsley, whipped Persian fetta, homemade chilli oil, pickled eschalots, poached eggs, toasted sourdough (2330kJ)

TURKISH EGGS 22

Grilled pork chorizo, slow roasted cherry tomato, poached eggs, lemon & dill labneh, Aleppo butter, toasted focaccia (3530kJ)

TEMPURA CORN FRITTERS ^v ^{CHEF'S PICK} 24

Crispy tempura corn fritters, crushed avocado, tomato salsa, tomato relish, whipped Persian fetta, poached egg, soft herbs, parmesan snow (2840kJ)

TRUFFLE MUSHROOM BRUSCHETTA ^v 24

Mushrooms, avocado, parsley, eschalots, garlic, thyme, truffle butter, whipped Persian fetta, fried egg, chilli oil, on a toasted focaccia (2690kJ)

TRUFFLE MUSHROOM OMELETTE ^v ^{CHEF'S PICK} 25

Mixed mushrooms, asparagus, parsley, eschalots, garlic, truffle butter, creamy mushroom sauce, chilli oil, parmesan snow, toasted focaccia (3230kJ)

BREAKFAST GNOCCHI ^{CHEF'S PICK} 26

Homemade potato gnocchi, roasted tomato, pork chorizo, chilli, parsley, parmesan snow, poached egg (2810kJ)

Swap the chorizo for chicken (2530kJ)

EGGS BENEDICT 26

Poached eggs, crushed avo, sauteed spinach, hollandaise, toasted sourdough crumpet, fine herbs

Choice of Salmon (2630kJ) / Bacon (3370kJ) / Halloumi ^v (3260kJ)

LEAF BREKKIE ^v 26

Two poached eggs, grilled halloumi, hash browns, mushrooms, Sauteed spinach, crushed avocado and roasted tomato with toasted sourdough (3530kJ)

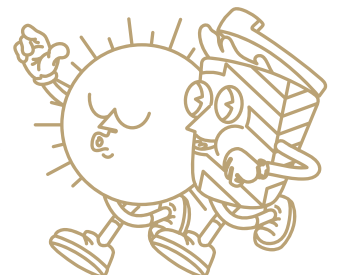
BIG BREAKFAST 28

Two eggs your way, cultured smoked umami spread, grilled pork chorizo, bacon, hash browns, smoked umami potato croquettes, roasted mushrooms served with toasted sourdough

Poached (4340kJ) / Scrambled (4440kJ) / Fried (4470kJ)

EXTRAS

| | |
|--|------------|
| AIOLI SAUCE (414KJ) / CHILLI OIL (287KJ) | 1 |
| HOLLANDAISE SAUCE (414KJ) / HASH BROWN (553KJ) | 3 |
| POACHED EGG (345KJ) / CULTURED SMOKED UMAMI SPREAD (540KJ) ^{CHEF'S PICK} | 3.5 |
| SAUTEED SPINACH (251KJ) / HAM (453KJ) / MUSHROOMS (160KJ) / AVOCADO (994KJ) / SMOKED UMAMI POTATO CROQUETTES - 2 PCS (590KJ) ^{CHEF'S PICK} | 4 |
| GRILLED BACON (1310KJ) / PORK CHORIZO (1310KJ) / GRILLED HALLOUMI (722KJ) | 6 |
| GRILLED CHICKEN (718KJ) / SCRAMBLED EGGS (734KJ) / SMOKED SALMON (561KJ) | 7 |
| POTATO CHIPS (1192KJ) | 9 |
| SWEET POTATO CHIPS (809KJ) | 12 |



BURGER, SANDWICHES AND MORE

TOASTIES

| | |
|--|----|
| Cheese & Tomato V (1830kJ) | 10 |
| Ham & Cheese (2010kJ) | 11 |
| Ham Cheese & Tomato (2060kJ) | 13 |
| Grilled Chicken, Cheese & Avocado (3110kJ) | 16 |

CHEESE MELTS

| | |
|------------------------------|----|
| Mushroom & Tomato V (1560kJ) | 14 |
| Ham & Pineapple (1920kJ) | 15 |
| Chicken & Avocado (2580kJ) | 16 |

CHICKEN SCHNITZEL WRAP 20

Panko crumbed chicken breast fillet, English cheddar cheese, lettuce, avocado, tomato, and sweet chilli mayo in a spinach wrap (3240kJ)

B.L.A.T. SANDO 21

Grilled bacon, shredded lettuce, tomato relish, sliced avocado, tomato, smokey chipotle mayo, fried eggs, toasted Shokupan bread (3350kJ)

Swap the bacon for halloumi v (3520kJ)

CHICKEN KATSU SANDO 24

Panko crumbed chicken breast, shredded lettuce, chives, Kewpie mayo, and Japanese BBQ sauce served on milk loaf bread, with a side of chips (5830kJ)

SMOKED ANGUS BEEF BRISKET SANDWICH 26

Slow smoked beef brisket, caramelised onion & mushroom relish, lettuce slaw, pickle, parmesan, seeded mustard mayo, served on a toasted focaccia (3650kJ)

GRILLED BEEF CHEESEBURGER 25

Homemade beef patty, homemade tomato relish, lettuce, tomato, pickle, melted cheddar cheese, grilled bacon and special burger sauce served on a milk bun, with a side of chips (6140kJ)

MAINS AND DESSERT

FISH & CHIPS 22

Crispy battered flathead fillets, chips, house salad, lemon and tartar sauce (3330kJ)

CHICKEN SCHNITZEL 23

Panko crumbed chicken breast fillet, house salad, chips, creamy mushroom sauce (3780kJ)

Make it **Parmi add +4** (Topped with napolitana sauce, ham, and mozzarella)

BELGIAN WAFFLE v 22

Seasonal berries, caramelised nuts, strawberries & rhubarb compote, whipped vanilla mascarpone, vanilla ice cream, Belgian chocolate sauce (4730kJ)

Add extra ice cream (+645kJ) +3

FOR THE LITTLE ONES

 available for 12 and under 😊

KID'S BREKKIE 12

Scrambled egg, hash brown and toast (1590kJ)

KID'S CHICKEN NUGGETS 12

With chips and tomato sauce (2650kJ)

KID'S PIKELETS 12

With seasonal fruits and ice cream (2160kJ)

KID'S WAFFLE 14

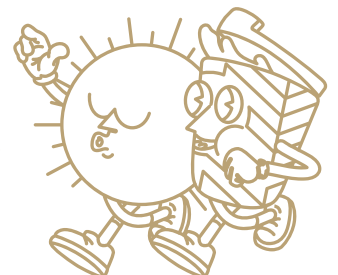
With ice cream, chocolate sauce, strawberries (2260kJ)

KID'S CHEESEBURGER 16

Grilled beef patty, cheese, BBQ sauce and chips (4550kJ)

KID'S FISH & CHIPS 16

Battered flathead, chips and tomato sauce (2200kJ)



BREW BAR

COLD DRIP COFFEE 7.5

A slow, four to six hour extracted coffee. Sweet, liquor-like flavour with low acidity. Sold in a bottle. Served on ice. (2kJ)

ESPRESSO | UPSIZE +0.8

Ristretto (2kJ) / Short Black (2kJ) 4.5
 Long Black (4kJ) / Macchiato (61kJ) / 5.0
 Piccolo (197kJ) / Flat White (451kJ) /
 Latte (541kJ) / Cappuccino (451kJ)

SPECIALTY | UPSIZE +0.8 5.2

Chai Latte (910kJ) / Taro Latte (1470kJ) /
 Green Tea Latte (929kJ) / Red Velvet Latte (1530kJ)

BELGIAN HOT CHOCOLATE | UPSIZE +1.5 6.2

We use Belgian couverture chocolate, high-quality chocolate that contains a higher percentage of cocoa.
 White (979kJ) / Milk (1250kJ) / Dark (1080kJ)

MOCHA | UPSIZE +1.5 6.2

We use Belgian couverture chocolate, high-quality chocolate that contains a higher percentage of cocoa.
 White (937kJ) / Milk (933kJ) / Dark (924kJ)

BABYCINO (133kJ) 2

EXTRAS

| | |
|---|-------------|
| Decaf (2kJ) / Extra Shot (2kJ) | +0.6 |
| Almond Milk (231kJ) / Soy Milk (361kJ) / Oat Milk (413kJ) | +0.8 |
| FLAVOUR Caramel (270kJ) / Hazelnut (274kJ) / Vanilla (274kJ) / Mint (280kJ) | +0.8 |

ORGANIC LOOSE LEAF TEA 5.2

Temperature controlled, brewed to perfection.

GOOD MORNING

Our luxurious take on English Breakfast Tea (2kJ)

EARL GREY BLUEFLOWER

Ceylon Orange Pekoe Black Tea infused with bergamot (2kJ)

GENMAICHA (KYOTO JAPAN)

Brothy Kyoto Green Tea with toasted rice (2kJ)

SILVER JASMINE (ZHEJIANG)

Silver Tipped Green Tea, infused with jasmine blossoms (2kJ)

DOUBLE MINT

Mint & spearmint, lavender and fennel seeds to aid digestion (2kJ)

LEMONGRASS GINGER

Lemongrass and ginger blend to restore minerals (2kJ)

CHAMOMILE LAVENDER

A floral bouquet with sweet honey notes that soothe (2kJ)

MASALA CHAI

Authentic Indian recipe of spices with Assam Tea base & honey (465kJ)

CHILLED BAR

ICED ESPRESSO

Iced Long Black (4kJ) / Iced Latte (1050kJ) 6.6
 Iced Coffee (1450kJ) 7.6
 Affogato (729kJ) 7

BLENDED 8.8

Coffee (1700kJ) / Chai Latte (910kJ) /
 Green Tea Latte (908kJ) / Taro Latte (1020kJ) /
 Red Velvet Latte (1020kJ)

BLENDED CHOCOLATE 10

White (3020kJ) / Milk (2957kJ) / Dark (2900kJ)

BLENDED MOCHA 10

White (2110kJ) / Milk (2100kJ) / Dark (2080kJ)

HANDCRAFTED SODA 7

New Zealand Golden Kiwi & Mint (860kJ) / Lychee (712kJ) /
 Cranberry & Lime (759kJ)

KOMBUCHA & ORGANIC ICED TEA | 350ML

RUBY KOMBUCHA 7

Grapefruit and hibiscus (105kJ)

ZEST KOMBUCHA 7

Lemon and chrysanthemum (105kJ)

SUNNY MORNING 6.5

Ceylon Orange Pekoe Tea with fresh lemon juice & mint (428kJ)

HIBISCUS DAWN 6.5

Liquid Turkish delight (307kJ)

COLD PRESSED JUICE | 350ML 8

STRAIGHT OJ

Freshly pressed orange juice (420kJ)

CLEAN & GREEN

Apple, pear, spinach & kale (581kJ)

FRUITY SMOOTHIE 9

AÇAÍ ^{DF}

Acai, guarana, banana (1525kJ)

PASSION TANGO ^{DF}

Pineapple, passionfruit, banana & mango (1330kJ)

SUMMER SUNSET ^{DF}

Pineapple, mango, strawberry & kiwi (1290kJ)

MILKSHAKE 7

Chocolate (1690kJ) / Vanilla (1540kJ) / Salted Caramel (1470kJ) /
 Strawberry (1550kJ) / or Banana (1290kJ)

WHEY Protein (502kJ) +2.5 / Make it a THICKSHAKE (1290kJ) +2.5

^{DF} dairy free • The average adult daily energy intake is 8700kJ

• Sorry, we can't remove or swap ingredients • 15% public holiday surcharge