

**TOAST WITH BUTTER AND CONDIMENTS**

Sourdough (856kJ)	7
Soy Linseed (1419kJ)	7
Gluten Free (856kJ)	8
Fruit Loaf with Honey (2010kJ)	8

Served with strawberry jam (150kJ) / peanut butter (273kJ) / Vegemite (35kJ) / **Add extra condiment +1**

**EGGS AS YOU LIKE <sup>v</sup> <sup>GFOR</sup>** **14**

Served on sourdough toast (see extras)  
Poached (1540kJ) / Scrambled (2000kJ) / Fried (2090kJ)

**BREKKIE BURGER** **17**

Bacon, fried egg, hash brown, lettuce, homemade tomato relish, tomato and aioli on a soft milk bun (2790kJ)

**Swap bacon to grilled halloumi cheese upon request (2740kJ)**

**Add cheese (+276kJ) +1 / Add avocado (+994kJ) +2 /**

**Wrap option available**

**GRANOLA YOGURT BOWL <sup>v</sup>** **19**

Poached strawberries and rhubarb, homemade baked granola, Greek yogurt, berries (2600kJ)

**EGG SALAD TOAST <sup>CHEF'S PICK</sup>** **19**

Cultured smoked umami spread, Japanese style egg salad, roe, chives on a toasted Shokupan (2940kJ)

**ULTIMATE BREAKFAST WRAP** **21**

Grilled pork chorizo patty, scrambled eggs, hash brown, lettuce, pickles, tomato salsa, spicy pineapple jalapeno relish, aioli, mozzarella cheese, wrapped in a spinach tortilla (3380kJ)

**CRUSHED AVOCADO ON TOAST <sup>v</sup>** **23**

Slow roasted cherry tomato, parsley, whipped Persian fetta, homemade chilli oil, pickled eschalots, poached eggs, toasted sourdough (2330kJ)

**TURKISH EGGS** **22**

Grilled pork chorizo, slow roasted cherry tomato, poached eggs, lemon & dill labneh, Aleppo butter, toasted focaccia (3530kJ)

**TEMPURA CORN FRITTERS <sup>v</sup> <sup>CHEF'S PICK</sup>** **24**

Crispy tempura corn fritters, crushed avocado, tomato salsa, tomato relish, whipped Persian fetta, poached egg, soft herbs, parmesan snow (2840kJ)

**TRUFFLE MUSHROOM OMELETTE <sup>v</sup> <sup>CHEF'S PICK</sup>** **25**

Mixed mushrooms, asparagus, parsley, eschalots, garlic, truffle butter, creamy mushroom sauce, chilli oil, parmesan snow, toasted focaccia (3230kJ)

**BREAKFAST GNOCCHI <sup>CHEF'S PICK</sup>** **26**

Homemade potato gnocchi, roasted tomato, pork chorizo, chilli, parsley, parmesan snow, poached egg (2810kJ)

**Swap the chorizo for chicken (2530kJ)**

**LEAF BREKKIE <sup>v</sup>** **26**

Two poached eggs, grilled halloumi, hash browns, mushrooms, Sauteed spinach, crushed avocado and roasted tomato with toasted sourdough (3530kJ)

**BIG BREAKFAST** **28**

Two eggs your way, cultured smoked umami spread, grilled pork chorizo, bacon, hash browns, smoked umami potato croquettes, roasted mushrooms served with toasted sourdough

**Poached (4340kJ) / Scrambled (4440kJ) / Fried (4470kJ)**

**VEGETARIAN WRAP <sup>v</sup>** **19**

Grilled halloumi, spiced eggplant, lettuce, tomato, coriander, raisin, Spanish onion and aioli in a spinach wrap (2940kJ)

**B.L.A.T. <sup>GFOR</sup>** **19**

Bacon, lettuce, crushed avocado, tomato and homemade sweet chilli mayo, served on toasted focaccia (3530kJ)

**Swap bacon with halloumi <sup>v</sup> (3440kJ)**

**GRILLED CHICKEN & MUSHROOM TOASTIE** **21**

Grilled chicken breast, English cheddar cheese, chives, truffle mayo, and caramelised onion & mushroom relish on toasted focaccia (3510kJ)

**CHICKEN SCHNITZEL** **23**

Panko crumbed chicken breast fillet, house salad, chips, creamy mushroom sauce (3780kJ)

**Make it Parm add +4** (Topped with napolitana sauce, ham, and mozzarella)

**CHICKEN KATSU SANDO** **24**

Panko crumbed chicken breast, shredded lettuce, chives, Kewpie mayo, and Japanese BBQ sauce served on milk loaf bread, with a side of chips (5830kJ)

**GRILLED BEEF CHEESEBURGER** **25**

Homemade beef patty, homemade tomato relish, lettuce, tomato, pickle, melted cheddar cheese, grilled bacon and special burger sauce served on a milk bun, with a side of chips (6140kJ)

**EXTRAS**

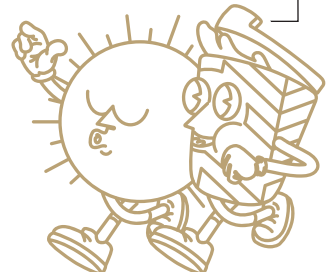
<b>AIOLI SAUCE (414KJ) / CHILLI OIL (287KJ)</b>	<b>1</b>
<b>HOLLANDAISE SAUCE (414KJ) / HASH BROWN (553KJ)</b>	<b>3</b>
<b>POACHED EGG (345KJ) / CULTURED SMOKED UMAMI SPREAD (540KJ) <sup>CHEF'S PICK</sup></b>	<b>3.5</b>
<b>SAUTEED SPINACH (251KJ) / HAM (453KJ) / MUSHROOMS (160KJ) / AVOCADO (994KJ) / SMOKED UMAMI POTATO CROQUETTES - 2 PCS (590KJ) <sup>CHEF'S PICK</sup></b>	<b>4</b>
<b>GRILLED BACON (1310KJ) / PORK CHORIZO (1310KJ) / GRILLED HALLOUMI (722KJ)</b>	<b>6</b>
<b>GRILLED CHICKEN (718KJ) / SCRAMBLED EGGS (734KJ) / SMOKED SALMON (561KJ)</b>	<b>7</b>
<b>POTATO CHIPS (1192KJ)</b>	<b>9</b>
<b>SWEET POTATO CHIPS (809KJ)</b>	<b>12</b>

**FOR THE LITTLE ONES**

 available for 12 and under 😊

<b>KID'S BREKKIE</b>	<b>12</b>
Scrambled egg, hash brown and toast (1590kJ)	
<b>KID'S CHICKEN NUGGETS</b>	<b>12</b>
With chips and tomato sauce (2650kJ)	
<b>KID'S CHEESEBURGER</b>	<b>16</b>
Grilled beef patty, cheese, BBQ sauce and chips (4550kJ)	

## LEAF CAFÉ & CO



## BREW BAR

### COLD DRIP COFFEE **7.5**

A slow, four to six hour extracted coffee. Sweet, liquor-like flavour with low acidity. Sold in a bottle. Served on ice. (2kJ)

### ESPRESSO | UPSIZE +0.8

Ristretto (2kJ) / Short Black (2kJ) **4.5**

Long Black (4kJ) / Macchiato (61kJ) **5.0**

Piccolo (197kJ) / Flat White (451kJ) / Latte (541kJ) / Cappuccino (451kJ)

### SPECIALTY | UPSIZE +0.8 **5.2**

Chai Latte (910kJ) / Taro Latte (1470kJ) / Green Tea Latte (929kJ)

### BELGIAN HOT CHOCOLATE | UPSIZE +1.5 **6.2**

We use Belgian couverture chocolate, high-quality chocolate that contains a higher percentage of cocoa.

White (979kJ) / Milk (1250kJ) / Dark (1080kJ)

### MOCHA | UPSIZE +1.5 **6.2**

We use Belgian couverture chocolate, high-quality chocolate that contains a higher percentage of cocoa.

White (937kJ) / Milk (933kJ) / Dark (924kJ)

### BABYCINO (133kJ) **2**

#### EXTRAS

Decaf (2kJ) / Extra Shot (2kJ) **+0.6**

Almond Milk (231kJ) / Soy Milk (361kJ) / **+0.8**

Oat Milk (413kJ) / Lactose Free Milk (534kJ)

FLAVOUR | Caramel (270kJ) / Hazelnut (274kJ) / **+0.8**

Vanilla (274kJ) / Mint (280kJ)

### ORGANIC LOOSE LEAF TEA **5.2**

Temperature controlled, brewed to perfection.

### GOOD MORNING

Our luxurious take on English Breakfast Tea (2kJ)

### EARL GREY BLUEFLOWER

Ceylon Orange Pekoe Black Tea infused with bergamot (2kJ)

### GENMAICHA (KYOTO JAPAN)

Brothy Kyoto Green Tea with toasted rice (2kJ)

### SILVER JASMINE (ZHEJIANG)

Silver Tipped Green Tea, infused with jasmine blossoms (2kJ)

### DOUBLE MINT

Mint & spearmint, lavender and fennel seeds to aid digestion (2kJ)

### LEMONGRASS GINGER

Lemongrass and ginger blend to restore minerals (2kJ)

### CHAMOMILE LAVENDER

A floral bouquet with sweet honey notes that soothe (2kJ)

### MASALA CHAI

Authentic Indian recipe of spices with Assam Tea base & honey (465kJ)

## CHILLED BAR

### ICED ESPRESSO

Iced Long Black (4kJ) / Iced Latte (1050kJ) **6.6**

Iced Coffee (1450kJ) **7.6**

Affogato (729kJ) **7**

### BLENDED **8.8**

Coffee (1700kJ) / Chai Latte (910kJ) /

Green Tea Latte (908kJ) / Taro Latte (1020kJ)

### BLENDED CHOCOLATE **10**

White (3020kJ) / Milk (2957kJ) / Dark (2900kJ)

### BLENDED MOCHA **10**

White (2110kJ) / Milk (2100kJ) / Dark (2080kJ)

### HANDCRAFTED SODA **7**

New Zealand Golden Kiwi & Mint (860kJ) / Lychee (712kJ) /

Cranberry & Lime (759kJ)

### KOMBUCHA & ORGANIC ICED TEA | 350ML

#### RUBY KOMBUCHA **7**

Grapefruit and hibiscus (105kJ)

#### ZEST KOMBUCHA **7**

Lemon and chrysanthemum (105kJ)

#### SUNNY MORNING **6.5**

Ceylon Orange Pekoe Tea with fresh lemon juice & mint (428kJ)

#### HIBISCUS DAWN **6.5**

Liquid Turkish delight (307kJ)

### COLD PRESSED JUICE | 350ML **8**

#### STRAIGHT OJ

Freshly pressed orange juice (420kJ)

#### CLEAN & GREEN

Apple, pear, spinach & kale (581kJ)

### FRUITY SMOOTHIE **9**

#### AÇAÍ <sup>DF</sup>

Açaí, guarana, banana (1525kJ)

#### PASSION TANGO <sup>DF</sup>

Pineapple, passionfruit, banana & mango (1330kJ)

#### SUMMER SUNSET <sup>DF</sup>

Pineapple, mango, strawberry & kiwi (1290kJ)

### MILKSHAKE **7**

Chocolate (1690kJ) / Vanilla (1540kJ) / Salted Caramel (1470kJ)

/ Strawberry (1550kJ) / or Banana (1290kJ)

Make it a THICKSHAKE (1290kJ) +2.5

#### COLD EXTRAS

Whey Protein Powder (502kJ) **2.5**