

BRUNCH

EGGS AS YOU LIKE ^{v GFOR} 14

Served on sourdough toast (see extras)
Poached (1540kJ) / Scrambled (2000kJ) / Fried (2090kJ)

BREKKIE BURGER 17

Bacon, fried egg, hash brown, lettuce, homemade tomato relish, tomato and aioli on a soft milk bun (2790kJ)
Swap bacon to grilled halloumi cheese upon request (2740kJ)
Add cheese (+276kJ) +1 / Add avocado (+994kJ) +2 / Wrap option available

BREKKIE WRAP 18

Bacon, scrambled eggs, hash brown, tomato relish, lettuce and hollandaise sauce in a spinach wrap (3370kJ)
Swap bacon to grilled halloumi cheese upon request (2440kJ)
Add cheese (+276kJ) +1 / Add avocado (+994kJ) +2

GRANOLA YOGURT BOWL ^v 19

Poached strawberries and rhubarb, homemade baked granola, Greek yogurt, berries (2600kJ)

EGG SALAD TOAST ^{CHEF'S PICK} 19

Cultured smoked umami spread, Japanese style egg salad, roe, chives on a toasted Shokupan (2940kJ)

OMELETTE ^{v GFOR} 21

Roasted mushrooms, braised tomato, parsley, mozzarella with toasted bread (2250kJ)
Add ham (+453kJ) +4 / Add chicken (+718kJ) +7 / Add smoked salmon (+561kJ) +7

TURKISH EGGS 22

Grilled pork chorizo, slow roasted cherry tomato, poached eggs, lemon & dill labneh, Aleppo butter, toasted focaccia (3530kJ)

CRUSHED AVOCADO ON TOAST ^v 23

Slow roasted cherry tomato, parsley, whipped Persian fetta, homemade chilli oil, pickled eschalots, poached eggs, toasted sourdough (2330kJ)

TEMPURA CORN FRITTERS ^{v CHEF'S PICK} 24

Crispy tempura corn fritters, crushed avocado, tomato salsa, tomato relish, whipped Persian fetta, poached egg, soft herbs, parmesan snow (2840kJ)

TRUFFLE MUSHROOM BRUSCHETTA ^v 24

Mushrooms, avocado, parsley, eschalots, garlic, thyme, truffle butter, whipped Persian fetta, fried egg, chilli oil, on a toasted focaccia (2690kJ)

CHILLI SCRAMBLED EGGS ON CRUMPET ^v 24

Slow braised eggplant relish, chilli oil, pan roasted tomato, parsley, grilled halloumi, toasted coconut, soft herbs, toasted sourdough crumpet (2860kJ)

TRUFFLE MUSHROOM OMELETTE ^v 25

Mixed mushrooms, asparagus, parsley, eschalots, garlic, truffle butter, creamy mushroom sauce, chilli oil, parmesan snow, toasted focaccia (3230kJ)

BREAKFAST GNOCCHI 26

Homemade potato gnocchi, roasted tomato, pork chorizo, chilli, parsley, parmesan snow, poached egg (2810kJ)
Swap the chorizo for chicken (2530kJ)

EGGS BENEDICT 26

Poached eggs, crushed avo, sauteed spinach, hollandaise, toasted sourdough crumpet, fine herbs
Choice of Salmon (2630kJ) / Bacon (3370kJ) / Halloumi ^v (3260kJ)

LEAF BREKKIE ^v 26

Two poached eggs, grilled halloumi, hash browns, mushrooms, Sauteed spinach, crushed avocado and roasted tomato with toasted sourdough (3530kJ)

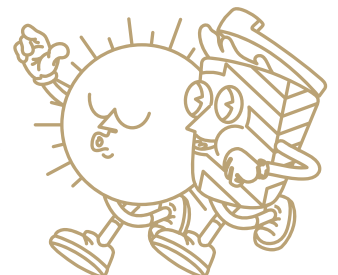
BIG BREAKFAST ^{CHEF'S PICK} 28

Two eggs your way, cultured smoked umami spread, grilled pork chorizo, bacon, hash browns, smoked umami potato croquettes, roasted mushrooms served with toasted sourdough
Poached (4340kJ) / Scrambled (4440kJ) / Fried (4470kJ)

EXTRAS

AIOLI SAUCE (414KJ) / CHILLI OIL (287KJ)	1
HOLLANDAISE SAUCE (414KJ) / HASH BROWN (553KJ)	3
POACHED EGG (345KJ) / CULTURED SMOKED UMAMI SPREAD (540KJ) ^{CHEF'S PICK}	3.5
SAUTEED SPINACH (251KJ) / HAM (453KJ) / MUSHROOMS (160KJ) / AVOCADO (994KJ) / SMOKED UMAMI POTATO CROQUETTES - 2 PCS (590KJ) ^{CHEF'S PICK}	4
GRILLED BACON (1310KJ) / PORK CHORIZO (1310KJ) / GRILLED HALLOUMI (722KJ)	6
GRILLED CHICKEN (718KJ) / SCRAMBLED EGGS (734KJ) / SMOKED SALMON (561KJ)	7
POTATO CHIPS (1192KJ)	9
SWEET POTATO CHIPS (809KJ)	12

LEAF CAFÉ & CO



BURGERS, SANDWICHES AND MORE

CHEESE MELTS

- Mushroom & Tomato V (1560kJ) 14
- Ham & Pineapple (1920kJ) 15
- Chicken & Avocado (2580kJ) 16

VEGETARIAN WRAP ^V 19

Grilled halloumi, spiced eggplant, lettuce, tomato, coriander, raisin, Spanish onion and aioli in a spinach wrap (2940kJ)

CHICKEN SCHNITZEL WRAP 20

Panko crumbed chicken breast fillet, English cheddar cheese, lettuce, avocado, tomato, and sweet chilli mayo in a spinach wrap (3240kJ)

B.L.A.T. SANDO ^{CHEF'S PICK} 21

Grilled bacon, shredded lettuce, tomato relish, sliced avocado, tomato, smokey chipotle mayo, fried eggs, toasted Shokupan bread (3350kJ)

Swap the bacon for halloumi ^V (3520kJ)

CHICKEN KATSU SANDO ^{CHEF'S PICK} 24

Panko crumbed chicken breast, shredded lettuce, chives, Kewpie mayo, and Japanese BBQ sauce served on milk loaf bread, with a side of chips (5830kJ)

GRILLED BEEF CHEESEBURGER 25

Homemade beef patty, homemade tomato relish, lettuce, tomato, pickle, melted cheddar cheese, grilled bacon and special burger sauce served on a milk bun, with a side of chips (6140kJ)

SALADS

SUPERFOOD SALAD ^{V GFOR} 22

Corn, avocado, onion, chilli, tomato, crispy chickpeas, kale, edamame, cous cous, roasted pumpkin, toasted seeds, honey mustard dressing (2060kJ)

GRILLED CHICKEN HARVEST BOWL 26

Grilled marinated chicken fillet, boiled eggs, avocado, sweet harvest corn, tomato, red onion, Persian feta, charred broccolini, fresh parsley, creamy garlic dressing (3640kJ)

MAINS AND DESSERT

CHICKEN SCHNITZEL 23

Panko crumbed chicken breast fillet, house salad, chips, creamy mushroom sauce (3780kJ)

Make it Parmi add +4 (Topped with napolitana sauce, ham, and mozzarella)

TEMPURA BARRAMUNDI FILLET & CHIPS 26

Crispy battered barramundi fillet, lemon, chips, house salad and tartar sauce (3300kJ)

SALMON RICE BOWL 30

Teriyaki marinated salmon, brown rice, edamame, avocado, greens, Kewpie mayo, furikake, chives (3850kJ)

LEMON RICOTTA PANCAKE ^{CHEF'S PICK} 22

Classic pancakes topped with lemon ricotta, strawberry & rhubarb compote, fresh seasonal berries, maple syrup, icing sugar (4050kJ)

FOR THE LITTLE ONES

 available for 12 and under 😊

KID'S BREKKIE 12

Scrambled egg, hash brown and toast (1590kJ)

KID'S CHICKEN NUGGETS 12

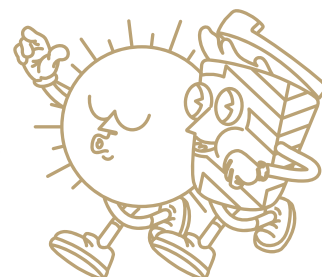
With chips and tomato sauce (2650kJ)

KID'S PIKELETS 12

With seasonal fruits and ice cream (2160kJ)

KID'S CHEESEBURGER 16

Grilled beef patty, cheese, BBQ sauce and chips (4550kJ)



BREW BAR

COLD DRIP COFFEE 7.5

A slow, four to six hour extracted coffee. Sweet, liquor-like flavour with low acidity. Sold in a bottle. Served on ice. (2kJ)

ESPRESSO | UPSIZE +0.8

Ristretto (2kJ) / Short Black (2kJ) 4.5

Long Black (4kJ) / Macchiato (61kJ) / 5.0

Piccolo (197kJ) / Flat White (451kJ) /

Latte (541kJ) / Cappuccino (451kJ)

SPECIALTY | UPSIZE +0.8 5.2

Chai Latte (910kJ) / Taro Latte (1470kJ) /

Green Tea Latte (929kJ) / Red Velvet Latte (1530kJ)

BELGIAN HOT CHOCOLATE | UPSIZE +1.5 6.2

We use Belgian couverture chocolate, high-quality chocolate that contains a higher percentage of cocoa.

White (979kJ) / Milk (1250kJ) / Dark (1080kJ)

MOCHA | UPSIZE +1.5 6.2

We use Belgian couverture chocolate, high-quality chocolate that contains a higher percentage of cocoa.

White (937kJ) / Milk (933kJ) / Dark (924kJ)

BABYCINO (133kJ) 2

EXTRAS

Decaf (2kJ) / Extra Shot (2kJ) +0.6

Almond Milk (231kJ) / Soy Milk (361kJ) / +0.8

Oat Milk (413kJ) / Lactose Free Milk (534kJ)

FLAVOUR | Caramel (270kJ) / Hazelnut (274kJ) / +0.8

Vanilla (274kJ) / Mint (280kJ)

ORGANIC LOOSE LEAF TEA 5.2

Temperature controlled, brewed to perfection.

GOOD MORNING

Our luxurious take on English Breakfast Tea (2kJ)

EARL GREY BLUEFLOWER

Ceylon Orange Pekoe Black Tea infused with bergamot (2kJ)

GENMAICHA (KYOTO JAPAN)

Brothy Kyoto Green Tea with toasted rice (2kJ)

SILVER JASMINE (ZHEJIANG)

Silver Tipped Green Tea, infused with jasmine blossoms (2kJ)

DOUBLE MINT

Mint & spearmint, lavender and fennel seeds to aid digestion (2kJ)

LEMONGRASS GINGER

Lemongrass and ginger blend to restore minerals (2kJ)

CHAMOMILE LAVENDER

A floral bouquet with sweet honey notes that soothe (2kJ)

MASALA CHAI

Authentic Indian recipe of spices with Assam Tea base & honey (465kJ)

CHILLED BAR

ICED ESPRESSO

Iced Long Black (4kJ) / Iced Latte (1050kJ) 6.6

Iced Coffee (1450kJ) 7.6

Affogato (729kJ) 7

BLENDED 8.8

Coffee (1700kJ) / Chai Latte (910kJ) /

Green Tea Latte (908kJ)

BLENDED CHOCOLATE 10

White (3020kJ) / Milk (2957kJ) / Dark (2900kJ)

BLENDED MOCHA 10

White (2110kJ) / Milk (2100kJ) / Dark (2080kJ)

HANDCRAFTED SODA 7

New Zealand Golden Kiwi & Mint (860kJ) / Lychee (712kJ) /

Cranberry & Lime (759kJ)

KOMBUCHA & ORGANIC ICED TEA | 350ML

RUBY KOMBUCHA 7

Grapefruit and hibiscus (105kJ)

ZEST KOMBUCHA 7

Lemon and chrysanthemum (105kJ)

SUNNY MORNING 6.5

Ceylon Orange Pekoe Tea with fresh lemon juice & mint (428kJ)

HIBISCUS DAWN 6.5

Liquid Turkish delight (307kJ)

COLD PRESSED JUICE | 350ML 8

STRAIGHT OJ

Freshly pressed orange juice (420kJ)

CLEAN & GREEN

Apple, pear, spinach & kale (581kJ)

MELLOWBERRY

Watermelon & strawberry (466kJ)

FRUITY SMOOTHIE 9

AÇAÍ ^{DF}

Açaí, guarana, banana (1525kJ)

PASSION TANGO ^{DF}

Pineapple, passionfruit, banana & mango (1330kJ)

SUMMER SUNSET ^{DF}

Pineapple, mango, strawberry & kiwi (1290kJ)

STRANANA

Strawberry, banana, milk & honey (1290kJ)

MILKSHAKE 7

Chocolate (1690kJ) / Vanilla (1540kJ) / Salted Caramel (1470kJ)

/ Strawberry (1550kJ) / or Banana (1290kJ)

WHEY Protein (502kJ) +2.5 / Make it a THICKSHAKE (1290kJ) +2.5

^{DF}dairy free • The average adult daily energy intake is 8700kJ

• Sorry, we can't remove or swap ingredients • 15% public holiday surcharge