

## BRUNCH

### TOAST WITH BUTTER AND CONDIMENTS

Sourdough (856kJ)	7
Soy Linseed (1419kJ)	7
Gluten Free (856kJ)	8
Fruit Loaf with Honey (2010kJ)	8

Served with strawberry jam (150kJ) / peanut butter (273kJ) / Vegemite (35kJ) / **Add extra condiment +1**

### EGGS AS YOU LIKE <sup>v GFOR</sup> 14

Served on sourdough toast (see extras)  
Poached (1540kJ) / Scrambled (2000kJ) / Fried (2090kJ)

### BREKKIE BURGER 17

Bacon, fried egg, hash brown, lettuce, homemade tomato relish, tomato and aioli on a soft milk bun (2790kJ)  
**Swap bacon to grilled halloumi cheese upon request (2740kJ)**  
**Add cheese (+276kJ) +1 / Add avocado (+994kJ) +2 /**  
**Wrap option available**

### EGG SALAD TOAST <sup>CHEF'S PICK</sup> 19

Cultured smoked umami spread, Japanese style egg salad, roe, chives on a toasted Shokupan (2940kJ)

### BREKKIE WRAP 18

Bacon, scrambled eggs, hash brown, tomato relish, lettuce and hollandaise sauce in a spinach wrap (3370kJ)  
**Swap bacon to grilled halloumi cheese upon request (2440kJ)**  
**Add cheese (+276kJ) +1 / Add avocado (+994kJ) +2**

### CHEESY BACON OMELETTE 22

Roasted mushroom, cherry tomato, baby spinach, grilled bacon, mozzarella cheese, parsley, toasted focaccia (2340kJ)  
**Vegetarian option available**

### TURKISH EGGS 22

Grilled pork chorizo, slow roasted cherry tomato, poached eggs, lemon & dill labneh, Aleppo butter, toasted focaccia (3530kJ)

### CRUSHED AVOCADO ON TOAST <sup>v</sup> 22

Slow roasted cherry tomato, parsley, whipped Persian fetta, homemade chilli oil, pickled eschalots, poached eggs, toasted sourdough (2330kJ)

### TEMPURA CORN FRITTERS <sup>v</sup> 22

Crispy tempura corn fritters, crushed avocado, tomato salsa, tomato relish, whipped Persian fetta, poached egg, soft herbs, parmesan snow (2840kJ)

### TRUFFLE MUSHROOM OMELETTE <sup>v</sup> <sup>CHEF'S PICK</sup> 24

Mixed mushrooms, asparagus, parsley, eschalots, garlic, truffle butter, creamy mushroom sauce, chilli oil, parmesan snow, toasted focaccia (3230kJ)

### BREAKFAST GNOCCHI <sup>CHEF'S PICK</sup> 26

Homemade potato gnocchi, roasted tomato, pork chorizo, chilli, parsley, parmesan snow, poached egg (2810kJ)  
**Swap the chorizo for chicken (2530kJ)**

### LEAF BREKKIE <sup>v</sup> 26

Two poached eggs, grilled halloumi, hash browns, mushrooms, Sautéed spinach, crushed avocado and roasted tomato with toasted sourdough (3530kJ)

### BIG BREAKFAST 28

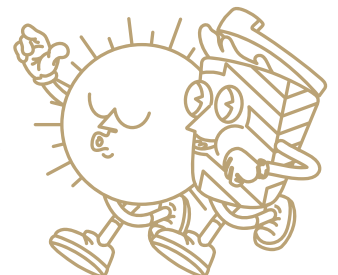
Two eggs your way, cultured smoked umami spread, grilled pork chorizo, bacon, hash browns, smoked umami potato croquettes, roasted mushrooms served with toasted sourdough  
**Poached (4340kJ) / Scrambled (4440kJ) / Fried (4470kJ)**

### EXTRAS

AIOLI SAUCE (414kJ) / CHILLI OIL (287kJ)	1
HOLLANDAISE SAUCE (414kJ) / HASH BROWN (553kJ)	3
POACHED EGG (345kJ) / CULTURED SMOKED UMAMI SPREAD (540kJ) <sup>CHEF'S PICK</sup>	3.5
SAUTEED SPINACH (251kJ) / HAM (453kJ) / MUSHROOMS (160kJ) / AVOCADO (994kJ) / SMOKED UMAMI POTATO CROQUETTES - 2 PCS (590kJ) <sup>CHEF'S PICK</sup>	4
GRILLED BACON (1310kJ) / PORK CHORIZO (1310kJ) / GRILLED HALLOUMI (722kJ)	6
GRILLED CHICKEN (718kJ) / SCRAMBLED EGGS (734kJ) / SMOKED SALMON (561kJ)	7
POTATO CHIPS (1192kJ)	9
SWEET POTATO CHIPS (809kJ)	12

THE AVERAGE ADULT DAILY ENERGY INTAKE IS 8700KJ

LEAF CAFÉ & CO



## SANDWICHES, BURGER AND MORE

### TOASTIES

Cheese & Tomato V (1830kJ)	10
Ham & Cheese (2010kJ)	11
Ham Cheese & Tomato (2060kJ)	13
Grilled Chicken, Cheese & Avocado (3110kJ)	16

### CHEESE MELTS

Mushroom & Tomato V (1560kJ)	14
Ham & Pineapple (1920kJ)	15
Chicken & Avocado (2580kJ)	16

### B.L.A.T. <sup>GFOR</sup>

Bacon, lettuce, crushed avocado, tomato and homemade sweet chilli mayo, served on toasted focaccia (3530kJ)	19
Swap bacon with halloumi V (3440kJ)	

### GRILLED HALLOUMI WRAP <sup>V</sup>

Roasted pumpkin, avocado, crispy chickpeas, raisins, tomato salsa, eggplant, coriander, grilled halloumi, shredded lettuce, aioli in a spinach wrap (2100kJ)	20
Add chips (+715kJ) +4	

### CHICKEN SCHNITZEL WRAP

Panko crumbed chicken breast fillet, English cheddar cheese, lettuce, avocado, tomato, and sweet chilli mayo in a spinach wrap (3240kJ)	20
Add chips (+715kJ) +4	

### GRILLED CHICKEN & MUSHROOM TOASTIE

Grilled chicken breast, English cheddar cheese, chives, truffle mayo, and caramelised onion & mushroom relish on toasted focaccia (3510kJ)	21
--	----

### CHICKEN KATSU SANDO

Panko crumbed chicken breast, shredded lettuce, chives, Kewpie mayo, and Japanese BBQ sauce served on milk loaf bread, with a side of chips (5830kJ)	24
--	----

### GRILLED BEEF CHEESEBURGER

Homemade beef patty, homemade tomato relish, lettuce, tomato, pickle, melted cheddar cheese, grilled bacon and special burger sauce served on a milk bun, with a side of chips (6140kJ)	25
---	----

## SALAD, MAINS AND DESSERT

### SUPERFOOD SALAD <sup>V GFOR</sup>

Corn, avocado, onion, chilli, tomato, crispy chickpeas, kale, edamame, cous cous, roasted pumpkin, toasted seeds, honey mustard dressing (2060kJ)	22
Add avocado (+994kJ) +4 / Halloumi (+722kJ) +6 / Chicken (+718kJ) +7 / Smoked salmon (+561kJ) +7	

### FISH & CHIPS

Crispy battered flathead fillets, chips, house salad, lemon and tartar sauce (3330kJ)	22
---	----

### CHICKEN SCHNITZEL

Panko crumbed chicken breast fillet, house salad, chips, creamy mushroom sauce (3780kJ)	23
Make it <b>Parmi add +4</b> (Topped with napolitana sauce, ham, and mozzarella)	

### BERRIES & NUTS PANCAKE <sup>V GFOR</sup> <sup>CHEF'S PICK</sup>

Seasonal berries, vanilla ice cream, mixed caramelised nuts, toasted coconut, whipped vanilla mascarpone and genuine maple syrup (3700kJ)	22
Add extra ice cream (+645kJ) +3	

### FOR THE LITTLE ONES

👶 available for 12 and under 😊

#### KID'S BREKKIE

Scrambled egg, hash brown and toast (1590kJ)	12
--	----

#### KID'S CHICKEN NUGGETS

With chips and tomato sauce (2650kJ)	12
--------------------------------------	----

#### KID'S PIKELETS

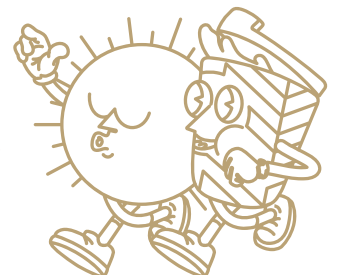
With seasonal fruits and ice cream (2160kJ)	12
---	----

#### KID'S CHEESEBURGER

Grilled beef patty, cheese, BBQ sauce and chips (4550kJ)	16
--	----

THE AVERAGE ADULT DAILY ENERGY INTAKE IS 8700KJ

LEAF CAFÉ & CO



## BREW BAR

### ESPRESSO | UPSIZE +0.8

Ristretto (2kJ) / Short Black (2kJ)	4.5
Long Black (4kJ) / Macchiato (61kJ) / Piccolo (197kJ) / Flat White (451kJ) / Latte (541kJ) / Cappuccino (451kJ)	5.0

### SPECIALTY | UPSIZE +0.8

Chai Latte (910kJ) / Green Tea Latte (929kJ)	5.2
--	-----

### BELGIAN HOT CHOCOLATE | UPSIZE +1.5

We use Belgian couverture chocolate, high-quality chocolate that contains a higher percentage of cocoa. White (979kJ) / Milk (1250kJ) / Dark (1080kJ)	6.2
--	-----

### MOCHA | UPSIZE +1.5

We use Belgian couverture chocolate, high-quality chocolate that contains a higher percentage of cocoa. White (937kJ) / Milk (933kJ) / Dark (924kJ)	6.2
--	-----

### BABYCINO (133kJ)

2

### EXTRAS

Decaf (2kJ) / Extra Shot (2kJ)	+0.6
Almond Milk (231kJ) / Soy Milk (361kJ) / Oat Milk (413kJ) / Lactose Free Milk (534kJ)	+0.8
FLAVOUR   Caramel (270kJ) / Hazelnut (274kJ) / Vanilla (274kJ) / Mint (280kJ)	+0.8

### ORGANIC LOOSE LEAF TEA

5.2

Temperature controlled, brewed to perfection.

### GOOD MORNING

Our luxurious take on English Breakfast Tea (2kJ)

### EARL GREY BLUEFLOWER

Ceylon Orange Pekoe Black Tea infused with bergamot (2kJ)

### GENMAICHA (KYOTO JAPAN)

Brothy Kyoto Green Tea with toasted rice (2kJ)

### SILVER JASMINE (ZHEJIANG)

Silver Tipped Green Tea, infused with jasmine blossoms (2kJ)

### DOUBLE MINT

Mint & spearmint, lavender and fennel seeds to aid digestion (2kJ)

### LEMONGRASS GINGER

Lemongrass and ginger blend to restore minerals (2kJ)

### CHAMOMILE LAVENDER

A floral bouquet with sweet honey notes that soothe (2kJ)

### MASALA CHAI

Authentic Indian recipe of spices with Assam Tea base & honey (465kJ)

## CHILLED BAR

### ICED ESPRESSO

Iced Long Black (4kJ) / Iced Latte (1050kJ)	6.6
Iced Coffee (1450kJ)	7.6
Affogato (729kJ)	7

### BLENDED

Coffee (1700kJ) / Chai Latte (910kJ) / Green Tea Latte (908kJ)

### BLENDED CHOCOLATE

White (3020kJ) / Milk (2957kJ) / Dark (2900kJ)

### BLENDED MOCHA

White (2110kJ) / Milk (2100kJ) / Dark (2080kJ)

### HANDCRAFTED SODA

New Zealand Golden Kiwi & Mint (860kJ) / Lychee (712kJ) /  
Cranberry & Lime (759kJ)

### KOMBUCHA & ORGANIC ICED TEA | 350ML

#### RUBY KOMBUCHA

Grapefruit and hibiscus (105kJ) 7

#### ZEST KOMBUCHA

Lemon and chrysanthemum (105kJ) 7

#### SUNNY MORNING

Ceylon Orange Pekoe Tea with fresh lemon juice & mint (428kJ) 6.5

#### HIBISCUS DAWN

Liquid Turkish delight (307kJ) 6.5

### COLD PRESSED JUICE | 350ML

8

#### STRAIGHT OJ

Freshly pressed orange juice (420kJ)

#### CLEAN & GREEN

Apple, pear, spinach & kale (581kJ)

### FRUITY SMOOTHIE

9

#### AÇAÍ <sup>DF</sup>

Açaí, guarana, banana (1525kJ)

#### PASSION TANGO <sup>DF</sup>

Pineapple, passionfruit, banana & mango (1330kJ)

#### SUMMER SUNSET <sup>DF</sup>

Pineapple, mango, strawberry & kiwi (1290kJ)

#### STRANANA

Strawberry, banana, milk & honey (1290kJ)

#### WATERMELON CRUSH <sup>DF</sup>

Watermelon (589kJ)

### PROTEIN SHAKE | WITH ALMOND OR OAT MILK

11.5

#### THE ENERGISER | 29G PROTEIN

Kiwi, spinach, avo, pineapple, coconut, banana, chia seed  
Almond (1881kJ) / Oat (2069kJ)

#### BERRY BOOST | 32G PROTEIN

Açaí, guarana, banana, chia seed  
Almond (2322kJ) / Oat (2510kJ)

### MILKSHAKE

7

Chocolate (1690kJ) / Vanilla (1540kJ) / Strawberry (1550kJ) /  
or Banana (1290kJ)

WHEY Protein (502kJ) +2.5 / Make it a THICKSHAKE (1290kJ) +2.5