

## BRUNCH

### EGGS AS YOU LIKE <sup>v</sup> <sup>GFOR</sup> 14

Served on sourdough toast (see extras)  
Poached (1540kJ) / Scrambled (2000kJ) / Fried (2090kJ)

### BREKKIE WRAP 18

Bacon, scrambled eggs, hash brown, tomato relish, lettuce and hollandaise sauce in a spinach wrap (3370kJ)  
Swap bacon to grilled halloumi cheese upon request (2440kJ)  
Add cheese (+276kJ) +1 / Add avocado (+994kJ) +2

### SAUSAGE & EGG BURGER 18

Grilled pork chorizo sausage patty, homemade caramelised onion & mushroom relish, pickles, special burger sauce, melted cheddar cheese, fried egg on a toasted milk bun (4690kJ)

### EGG SALAD TOAST <sup>CHEF'S PICK</sup> 18

Cultured smoked umami spread, Japanese style egg salad, roe, chives on a toasted Shokupan (2940kJ)

### ULTIMATE BREAKFAST WRAP 21

Grilled pork chorizo patty, scrambled eggs, hash brown, lettuce, pickles, tomato salsa, spicy pineapple jalapeno relish, aioli, mozzarella cheese, wrapped in a spinach tortilla (3380kJ)

### CHEESY BACON OMELETTE 22

Roasted mushroom, cherry tomato, baby spinach, grilled bacon, mozzarella cheese, parsley, toasted focaccia (2340kJ)  
Vegetarian option available

### TURKISH EGGS 22

Grilled pork chorizo, slow roasted cherry tomato, poached eggs, lemon & dill labneh, Aleppo butter, toasted focaccia (3530kJ)

### CRUSHED AVOCADO ON TOAST <sup>v</sup> 21

Slow roasted cherry tomato, parsley, whipped Persian fetta, homemade chilli oil, pickled eschalots, poached eggs, toasted sourdough (2330kJ)

### TEMPURA CORN FRITTERS <sup>v</sup> 24

Crispy tempura corn fritters, crushed avocado, tomato salsa, tomato relish, whipped Persian fetta, poached egg, soft herbs, parmesan snow (2840kJ)

### TRUFFLE MUSHROOM OMELETTE <sup>v</sup> <sup>CHEF'S PICK</sup> 25

Mixed mushrooms, asparagus, parsley, eschalots, garlic, truffle butter, creamy mushroom sauce, chilli oil, parmesan snow, toasted focaccia (3230kJ)

### SMOKED SALMON BENNY ON OKONOMIROSTI 25

Japanese style rosti, smoked salmon, poached eggs, avocado, roe, corn salsa, hollandaise, fine herbs (2430kJ)  
Swap the salmon for ham (2630kJ) or bacon (2900kJ) upon request

### BREAKFAST GNOCCHI <sup>CHEF'S PICK</sup> 24

Homemade potato gnocchi, roasted tomato, pork chorizo, chilli, parsley, parmesan snow, poached egg (2810kJ)  
Swap the chorizo for chicken (2530kJ)

### EGGS BENEDICT 22

Poached eggs, crushed avo, sauteed spinach, hollandaise, toasted sourdough crumpet, fine herbs  
Choice of Salmon (2630kJ) / Bacon (3370kJ) / Halloumi <sup>v</sup> (3260kJ)

### LEAF BREKKIE <sup>v</sup> 26

Two poached eggs, grilled halloumi, hash browns, mushrooms, Sauteed spinach, crushed avocado and roasted tomato with toasted sourdough (3530kJ)

### BIG BREAKFAST 28

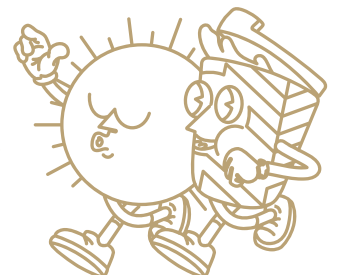
Two eggs your way, cultured smoked umami spread, grilled pork chorizo, bacon, hash browns, smoked umami potato croquettes, roasted mushrooms served with toasted sourdough  
Poached (4340kJ) / Scrambled (4440kJ) / Fried (4470kJ)

## EXTRAS

AIOLI SAUCE (414KJ) / CHILLI OIL (287KJ)	1
HOLLANDAISE SAUCE (414KJ) / HASH BROWN (553KJ)	3
POACHED EGG (345KJ) / CULTURED SMOKED UMAMI SPREAD (540KJ) <sup>CHEF'S PICK</sup>	3.5
SAUTEED SPINACH (251KJ) / HAM (453KJ) / MUSHROOMS (160KJ) / AVOCADO (994KJ) / SMOKED UMAMI POTATO CROQUETTES - 2 PCS (590KJ) <sup>CHEF'S PICK</sup>	4
GRILLED BACON (1310KJ) / PORK CHORIZO (1310KJ) / GRILLED HALLOUMI (722KJ)	6
GRILLED CHICKEN (718KJ) / SCRAMBLED EGGS (734KJ)	7
SMOKED SALMON (561KJ) / POTATO CHIPS (1192KJ)	8

THE AVERAGE ADULT DAILY ENERGY INTAKE IS 8700KJ

LEAF CAFÉ & CO



**BURGER, SANDWICHES AND MORE**

**TOASTIES**

- Cheese & Tomato <sup>v</sup> (1830kJ) 11
- Ham & Cheese (2010kJ) 12
- Ham Cheese & Tomato (2060kJ) 14

**CHEESE MELTS**

- Mushroom & Tomato <sup>v</sup> (1560kJ) 16
- Ham & Pineapple (1920kJ) 16
- Chicken & Avocado (2580kJ) 18
- Add chips (+715kJ) +4

**MEDITERRANEAN GRILLED CHEESE TOASTIE <sup>v</sup> 18**

Roasted pumpkin, tomato salsa, melted cheddar cheese, corn, aioli, caramelised onion & mushroom relish, served on toasted focaccia (3270kJ)

**B.L.A.T. <sup>GFOR</sup> 19**

Bacon, lettuce, crushed avocado, tomato and homemade sweet chilli mayo, served on toasted focaccia (3530kJ)  
 Swap bacon with halloumi <sup>v</sup> (3440kJ)  
 Add chips (+715kJ) +4

**CHICKEN SCHNITZEL WRAP 20**

Panko crumbed chicken breast fillet, English cheddar cheese, lettuce, avocado, tomato, and sweet chilli mayo in a spinach wrap (3240kJ)  
 Add chips (+715kJ) +4

**SMOKED SALMON SANDWICH 22**

Smoked salmon, avocado, egg salad, pickled eschalots, crispy capers, red onion, sour cream, served on toasted focaccia (3130kJ)  
 Add chips (+715kJ) +4

**SMOKED ANGUS BEEF <sup>CHEF'S PICK</sup> BRISKET SANDWICH 23**

Slow smoked beef brisket, caramelised onion & mushroom relish, lettuce slaw, pickle, parmesan, seeded mustard mayo, served on a toasted focaccia (3650kJ)  
 Add chips (+715kJ) +4

**CHICKEN KATSU SANDO 24**

Panko crumbed chicken breast, shredded lettuce, chives, Kewpie mayo, and Japanese BBQ sauce served on milk loaf bread, with a side of chips (5830kJ)

**GRILLED BEEF CHEESEBURGER 25**

Homemade beef patty, homemade tomato relish, lettuce, tomato, pickle, melted cheddar cheese, grilled bacon and special burger sauce served on a milk bun, with a side of chips (6140kJ)

**SALADS AND MAINS**

**ROASTED PUMPKIN SALAD <sup>v</sup> 21**

Roasted pumpkin, pepita seeds, whipped Persian fetta, tomato, avocado, leafy greens, roasted Spanish onion, balsamic glaze (2300kJ)  
 Add avocado (+994kJ) +4 / Halloumi (+722kJ) +6 / Chicken (+718kJ) +7 / Smoked salmon (+561kJ) +8

**GRILLED CHICKEN HARVEST BOWL 26**

Grilled marinated chicken fillet, boiled eggs, avocado, sweet harvest corn, tomato, red onion, Persian feta, charred broccolini, fresh parsley, creamy garlic dressing (3640kJ)

**FISH & CHIPS 23**

Crispy battered flathead fillets, chips, house salad, lemon and tartar sauce (3330kJ)

**CHICKEN SCHNITZEL 23**

Panko crumbed chicken breast fillet, house salad, chips, creamy mushroom sauce (3780kJ)

**BEEF CHEEKS OMURICE <sup>CHEF'S PICK</sup> 28**

6-hour slow cooked beef cheek, served on top of a soft omelette, tomato and seasonal veggie fried rice, demi glace sauce (3510kJ)

**FOR THE LITTLE ONES**

 available for 12 and under 

**KID'S BREKKIE 12**

Scrambled egg, hash brown and toast (1590kJ)

**KID'S CHICKEN NUGGETS 12**

With chips and tomato sauce (2650kJ)

**KID'S WAFFLE 14**

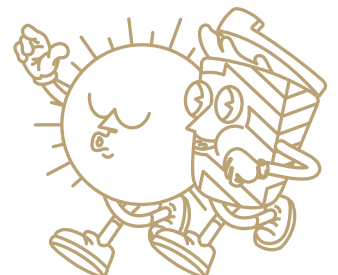
With ice cream, chocolate sauce, strawberries (2260kJ)

**KID'S CHEESEBURGER 16**

Grilled beef patty, cheese, BBQ sauce and chips (4550kJ)

THE AVERAGE ADULT DAILY ENERGY INTAKE IS 8700KJ

LEAF CAFÉ & CO



<sup>v</sup> vegetarian <sup>GF</sup> gluten free <sup>GFOR</sup> gluten free on request <sup>CHEF'S PICK</sup> chef's pick • The average adult daily energy intake is 8700kJ  
 • Please notify staff of food allergies • Sorry, we can't remove or swap ingredients • 15% public holiday surcharge • Halal chicken

**BREW BAR****COLD DRIP COFFEE 7.5**

A slow, four to six hour extracted coffee. Sweet, liquor-like flavour with low acidity. Sold in a bottle. Served on ice. (2kJ)

**ESPRESSO | UPSIZE +0.8**

Ristretto (2kJ) / Short Black (2kJ) **4.5**

Long Black (4kJ) / Macchiato (61kJ) / **5.0**

Piccolo (197kJ) / Flat White (451kJ) /

Latte (541kJ) / Cappuccino (451kJ)

**SPECIALTY | UPSIZE +0.8 5.2**

Chai Latte (910kJ) / Taro Latte (1470kJ) /

Green Tea Latte (929kJ)

**BELGIAN HOT CHOCOLATE | UPSIZE +1.5 6.2**

We use Belgian couverture chocolate, high-quality chocolate that contains a higher percentage of cocoa.

White (979kJ) / Milk (1250kJ) / Dark (1080kJ)

**MOCHA | UPSIZE +1.5 6.2**

We use Belgian couverture chocolate, high-quality chocolate that contains a higher percentage of cocoa.

White (937kJ) / Milk (933kJ) / Dark (924kJ)

**BABYCINO (133kJ) 2****EXTRAS**

Decaf (2kJ) / Extra Shot (2kJ) **+0.6**

Almond Milk (231kJ) / Soy Milk (361kJ) / **+0.8**

Oat Milk (413kJ) / Lactose Free Milk (534kJ)

**FLAVOUR | Caramel (270kJ) / Hazelnut (274kJ) / +0.8**

Vanilla (274kJ) / Mint (280kJ)

**ORGANIC LOOSE LEAF TEA 5.2**

Temperature controlled, brewed to perfection.

**GOOD MORNING**

Our luxurious take on English Breakfast Tea (2kJ)

**EARL GREY BLUEFLOWER**

Ceylon Orange Pekoe Black Tea infused with bergamot (2kJ)

**GENMAICHA (KYOTO JAPAN)**

Brothy Kyoto Green Tea with toasted rice (2kJ)

**SILVER JASMINE (ZHEJIANG)**

Silver Tipped Green Tea, infused with jasmine blossoms (2kJ)

**DOUBLE MINT**

Mint & spearmint, lavender and fennel seeds to aid digestion (2kJ)

**LEMONGRASS GINGER**

Lemongrass and ginger blend to restore minerals (2kJ)

**CHAMOMILE LAVENDER**

A floral bouquet with sweet honey notes that soothe (2kJ)

**MASALA CHAI**

Authentic Indian recipe of spices with Assam Tea base & honey (465kJ)

**CHILLED BAR****ICED ESPRESSO**

Iced Long Black (4kJ) / Iced Latte (1050kJ) **6.6**

Iced Coffee (1450kJ) **7.6**

Affogato (729kJ) **7**

**BLENDED 8.8**

Coffee (1700kJ) / Chai Latte (910kJ) /

Green Tea Latte (908kJ) / Taro Latte (1020kJ)

**BLENDED CHOCOLATE 10**

White (3020kJ) / Milk (2957kJ) / Dark (2900kJ)

**BLENDED MOCHA 10**

White (2110kJ) / Milk (2100kJ) / Dark (2080kJ)

**HANDCRAFTED SODA 7**

New Zealand Golden Kiwi & Mint (860kJ) / Lychee (712kJ) /

Cranberry & Lime (759kJ)

**COLD PRESSED JUICE | 350ML 8****STRAIGHT OJ**

Freshly pressed orange juice (420kJ)

**MELLOWBERRY**

Watermelon & strawberry (466kJ)

**FRUITY SMOOTHIE 9****AÇAÍ <sup>DF</sup>**

Açaí, guararana, banana (1525kJ)

**PASSION TANGO <sup>DF</sup>**

Pineapple, passionfruit, banana & mango (1330kJ)

**SUMMER SUNSET <sup>DF</sup>**

Pineapple, mango, strawberry & kiwi (1290kJ)

**STRANANA**

Strawberry, banana, vanilla ice cream, milk, & honey (1686kJ)

**MILKSHAKE 7**

Chocolate (1690kJ) / Vanilla (1540kJ) / Salted Caramel (1470kJ) /

Caramel (1536kJ) / Strawberry (1550kJ) / or Banana (1290kJ)

**WHEY Protein (502kJ) +2.5 / Make it a THICKSHAKE (1290kJ) +2.5**

LEAF CAFÉ &amp; CO

