

BRUNCH

EGGS AS YOU LIKE ^V ^{GFOR} **14**
Served on sourdough toast (see extras)
Poached (1540kJ) / Scrambled (2000kJ) / Fried (2090kJ)

BREKKIE WRAP **18**
Bacon, scrambled eggs, hash brown, tomato relish, lettuce and hollandaise sauce in a spinach wrap (3370kJ)
Swap bacon to grilled halloumi cheese upon request (2440kJ)
Add cheese (+276kJ) +1 / Add avocado (+994kJ) +2

EGG SALAD TOAST ^{CHEF'S PICK} **19**
Cultured smoked umami spread, Japanese style egg salad, roe, chives on a toasted Shokupan (2940kJ)

ULTIMATE BREAKFAST WRAP **21**
Grilled pork chorizo patty, scrambled eggs, hash brown, lettuce, pickles, tomato salsa, spicy pineapple jalapeno relish, aioli, mozzarella cheese, wrapped in a spinach tortilla (3380kJ)

CRUSHED AVOCADO ON TOAST ^V **23**
Slow roasted cherry tomato, parsley, whipped Persian fetta, homemade chilli oil, pickled eschalots, poached eggs, toasted sourdough (2330kJ)

TURKISH EGGS **22**
Grilled pork chorizo, slow roasted cherry tomato, poached eggs, lemon & dill labneh, Aleppo butter, toasted focaccia (3530kJ)

TEMPURA CORN FRITTERS ^V **24**
Crispy tempura corn fritters, crushed avocado, tomato salsa, tomato relish, whipped Persian fetta, poached egg, soft herbs, parmesan snow (2840kJ)

MUSHROOM SCRAMBLED EGGS ON CRUMPET ^V **24**
Chilli jam, Sauteed king trumpet mushroom, asparagus, whipped Persian fetta, and shiitake mushroom XO, toasted sourdough crumpet (2210kJ)

TRUFFLE MUSHROOM OMELETTE ^V ^{CHEF'S PICK} **25**
Mixed mushrooms, asparagus, parsley, eschalots, garlic, truffle butter, creamy mushroom sauce, chilli oil, parmesan snow, toasted focaccia (3230kJ)

GARLIC PRAWN OMELETTE **26**
Sauteed prawns, asparagus, garlic, roasted cherry tomato, eschalot, mozzarella cheese, napolitana sauce, parsley, toasted focaccia (2420kJ)

COASTAL CRUMPET DELIGHT **26**
Toasted sourdough crumpet topped with smoked salmon, sliced avocado, red onion, soft boiled egg, lemon & dill labneh, fine herbs (2600kJ)

EGGS BENEDICT **26**
Poached eggs, crushed avo, sauteed spinach, hollandaise, toasted sourdough crumpet, fine herbs
Choice of Salmon (2630kJ) / Bacon (3370kJ) / Halloumi ^V (3260kJ)

BREAKFAST GNOCCHI ^{CHEF'S PICK} **26**
Homemade potato gnocchi, roasted tomato, pork chorizo, chilli, parsley, parmesan snow, poached egg (2810kJ)
Swap the chorizo for chicken (2530kJ)

LEAF BREKKIE ^V **26**
Two poached eggs, grilled halloumi, hash browns, mushrooms, Sauteed spinach, crushed avocado and roasted tomato with toasted sourdough (3530kJ)

BIG BREAKFAST **28**
Two eggs your way, cultured smoked umami spread, grilled pork chorizo, bacon, hash browns, smoked umami potato croquettes, roasted mushrooms served with toasted sourdough
Poached (4340kJ) / Scrambled (4440kJ) / Fried (4470kJ)

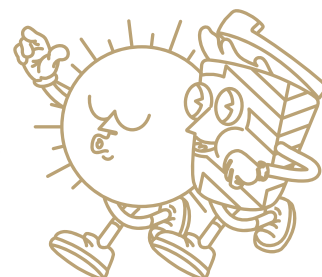
SALMON OKONOMIROSTI BENEDICT ^{CHEF'S PICK} **28**
Japanese fusion style rosti, sous-vide teriyaki marinated salmon, poached egg, crispy squid tentacles, sliced avocado, red onion, bonito flake, roe, hollandaise sauce, fine herbs (2970kJ)

EXTRAS

AIOLI SAUCE (414KJ) / CHILLI OIL (287KJ)	1
HOLLANDAISE SAUCE (414KJ) / HASH BROWN (553KJ)	3
POACHED EGG (345KJ) / CULTURED SMOKED UMAMI SPREAD (540KJ) ^{CHEF'S PICK}	3.5
SAUTEED SPINACH (251KJ) / HAM (453KJ) / MUSHROOMS (160KJ) / AVOCADO (994KJ) / SMOKED UMAMI POTATO CROQUETTES - 2 PCS (590KJ) ^{CHEF'S PICK}	4
GRILLED BACON (1310KJ) / PORK CHORIZO (1310KJ) / GRILLED HALLOUMI (722KJ)	6
GRILLED CHICKEN (718KJ) / SCRAMBLED EGGS (734KJ) / SMOKED SALMON (561KJ)	7
POTATO CHIPS (1192KJ)	9
SWEET POTATO CHIPS (809KJ)	12

THE AVERAGE ADULT DAILY ENERGY INTAKE IS 8700KJ

LEAF CAFÉ & CO



BURGERS, SANDWICHES AND MORE

VEGETARIAN WRAP ^v 19

Grilled halloumi, spiced eggplant, lettuce, tomato, coriander, raisin, Spanish onion and aioli in a spinach wrap (2940kJ)

B.L.A.T. ^{GFOR} 19

Bacon, lettuce, crushed avocado, tomato and homemade sweet chilli mayo, served on toasted focaccia (3530kJ)

Swap bacon with halloumi ^v (3440kJ)

CHICKEN FAJITA WRAP 20

Marinated fajita chicken, grilled peppers, onion, avocado, tomato salsa, baby cos, mozzarella cheese, smokey chipotle mayonnaise (mild) in a spinach wrap (2610kJ)

GRILLED CHICKEN & MUSHROOM TOASTIE 21

Grilled chicken breast, English cheddar cheese, chives, truffle mayo, and caramelised onion & mushroom relish on toasted focaccia (3510kJ)

WAGYU BEEF MENCHI KATSU SANDO ^{CHEF'S PICK} 26

Homemade wagyu beef menchi katsu, pickle, shredded lettuce, Kewpie mayo, tonkatsu sauce on a toasted Shokupan bread (3810kJ)

GRILLED BEEF CHEESEBURGER 25

Homemade beef patty, homemade tomato relish, lettuce, tomato, pickle, melted cheddar cheese, grilled bacon and special burger sauce served on a milk bun, with a side of chips (6140kJ)

SALADS

EMERALD GREEN BOWL ^v ^{CHEF'S PICK} 24

Pan roasted greens (broccolini, asparagus, kale), garlic butter, avocado, edamame, couscous, hummus, toasted seeds, parmesan snow, roasted sesame dressing (4740kJ)

Add chicken (+718kJ) +7

GARLIC PRAWNS, AVOCADO & CORN SALAD 26

Pan-roasted garlic prawns, shredded lettuce, corn, avocado, edamame, sundried tomato, peanut chilli crunch, carrots, red onion, roasted sesame dressing (2530kJ)

GRILLED CHICKEN HARVEST BOWL 26

Grilled marinated chicken fillet, boiled eggs, avocado, sweet harvest corn, tomato, red onion, Persian feta, charred broccolini, fresh parsley, creamy garlic dressing (3640kJ)

MAINS AND DESSERT

SPECIAL CHICKEN FRIED RICE 24

Brown rice, marinated chicken, seasonal veggies, shallots, chilli, furikake, Kewpie mayo, homemade special sauce (2371kJ)

ROASTED PORK BELLY & DUCK RICE BOWL 28

Roasted pork belly, smoked duck breast, broccolini, asparagus, garlic, eschalots, chilli, brown rice, fried egg (2610kJ)

SALMON RICE BOWL ^{CHEF'S PICK} 28

Teriyaki marinated salmon, brown rice, edamame, avocado, greens, Kewpie mayo, furikake, chives (3850kJ)

BEEF CHEEKS OMURICE 29

6-hour slow cooked beef cheek, served on top of a soft omelette, tomato and seasonal veggie fried rice, demi glace sauce (3510kJ)

BERRIES & NUTS PANCAKE ^v ^{CHEF'S PICK} 22

Seasonal berries, vanilla ice cream, mixed caramelised nuts, toasted coconut, whipped vanilla mascarpone and genuine maple syrup (3700kJ)

Add extra ice cream (+645kJ) +3

FOR THE LITTLE ONES

 available for 12 and under 

KID'S BREKKIE 12

Scrambled egg, hash brown and toast (1590kJ)

KID'S CHICKEN NUGGETS 12

With chips and tomato sauce (2650kJ)

KID'S PIKELETS 12

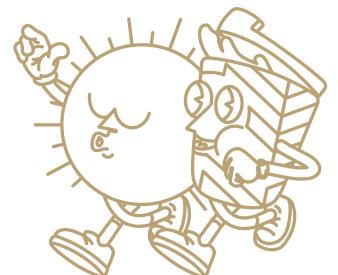
With seasonal fruits and ice cream (2160kJ)

KID'S SPAGHETTI 18

With beef bolognese, parmesan cheese (1320kJ)

THE AVERAGE ADULT DAILY ENERGY INTAKE IS 8700KJ

LEAF CAFÉ & CO



^v vegetarian ^{GF} gluten free ^{GFOR} gluten free on request ^{CHEF'S PICK} chef's pick • The average adult daily energy intake is 8700kJ

• Please notify staff of food allergies • Sorry, we can't remove or swap ingredients • 15% public holiday surcharge • Halal chicken

BREW BAR

COLD DRIP COFFEE 7.5

A slow, four to six hour extracted coffee. Sweet, liquor-like flavour with low acidity. Sold in a bottle. Served on ice. (2kJ)

BATCH BREW 6.0

We batch brew to bring out the subtle nuances that you can only taste in a black coffee. Medium size only. (2kJ)

ESPRESSO | UPSIZE +0.8

Ristretto (2kJ) / Short Black (2kJ) 4.5

Long Black (4kJ) / Macchiato (61kJ) / 5.0

Piccolo (197kJ) / Flat White (451kJ) /

Latte (541kJ) / Cappuccino (451kJ)

SPECIALTY | UPSIZE +0.8 5.2

Chai Latte (910kJ) / Taro Latte (1470kJ) /

Green Tea Latte (929kJ)

BELGIAN HOT CHOCOLATE | UPSIZE +1.5 6.2

We use Belgian couverture chocolate, high-quality chocolate that contains a higher percentage of cocoa.

White (979kJ) / Milk (1250kJ) / Dark (1080kJ)

MOCHA | UPSIZE +1.5 6.2

We use Belgian couverture chocolate, high-quality chocolate that contains a higher percentage of cocoa.

White (937kJ) / Milk (933kJ) / Dark (924kJ)

BABYCINO (133kJ) 2

EXTRAS

Decaf (2kJ) / Extra Shot (2kJ) +0.6

Almond Milk (231kJ) / Soy Milk (361kJ) / +0.8

Oat Milk (413kJ) / Lactose Free Milk (534kJ)

FLAVOUR | Caramel (270kJ) / Hazelnut (274kJ) / +0.8

Vanilla (274kJ) / Mint (280kJ)

ORGANIC LOOSE LEAF TEA 5.2

Temperature controlled, brewed to perfection.

GOOD MORNING

Our luxurious take on English Breakfast Tea (2kJ)

EARL GREY BLUEFLOWER

Ceylon Orange Pekoe Black Tea infused with bergamot (2kJ)

GENMAICHA (KYOTO JAPAN)

Brothy Kyoto Green Tea with toasted rice (2kJ)

SILVER JASMINE (ZHEJIANG)

Silver Tipped Green Tea, infused with jasmine blossoms (2kJ)

DOUBLE MINT

Mint & spearmint, lavender and fennel seeds to aid digestion (2kJ)

LEMONGRASS GINGER

Lemongrass and ginger blend to restore minerals (2kJ)

CHAMOMILE LAVENDER

A floral bouquet with sweet honey notes that soothe (2kJ)

MASALA CHAI

Authentic Indian recipe of spices with Assam Tea base & honey (465kJ)

CHILLED BAR

ICED ESPRESSO

Iced Long Black (4kJ) / Iced Latte (1050kJ) 6.6

Iced Coffee (1450kJ) 7.6

Affogato (729kJ) 7

BLENDED 8.8

Coffee (1700kJ) / Chai Latte (910kJ) /

Green Tea Latte (908kJ) / Taro Latte (1020kJ)

BLENDED CHOCOLATE 10

White (3020kJ) / Milk (2957kJ) / Dark (2900kJ)

BLENDED MOCHA 10

White (2110kJ) / Milk (2100kJ) / Dark (2080kJ)

HANDCRAFTED SODA 7

New Zealand Golden Kiwi & Mint (860kJ) / Lychee (712kJ) /

Cranberry & Lime (759kJ)

KOMBUCHA & ORGANIC ICED TEA | 350ML

RUBY KOMBUCHA 7

Grapefruit and hibiscus (105kJ)

ZEST KOMBUCHA 7

Lemon and chrysanthemum (105kJ)

SUNNY MORNING 6.5

Ceylon Orange Pekoe Tea with fresh lemon juice & mint (428kJ)

HIBISCUS DAWN 6.5

Liquid Turkish delight (307kJ)

COLD PRESSED JUICE | 350ML 8

STRAIGHT OJ

Freshly pressed orange juice (420kJ)

MELLOWBERRY

Watermelon & strawberry (466kJ)

FRUITY SMOOTHIE 9

PASSION TANGO ^{DF}

Pineapple, passionfruit, banana & mango (1330kJ)

SUMMER SUNSET ^{DF}

Pineapple, mango, strawberry & kiwi (1290kJ)

STRANANA

Strawberry, banana, milk & honey (1290kJ)

PROTEIN SHAKE | WITH ALMOND OR OAT MILK 11.5

THE ENERGISER | 29G PROTEIN

Kiwi, spinach, avo, pineapple, coconut, banana, chia seed

Almond (1881kJ) / Oat (2069kJ)

BERRY BOOST | 32G PROTEIN

Acai, guarana, banana, chia seed

Almond (2322kJ) / Oat (2510kJ)

MILKSHAKE 7

Chocolate (1690kJ) / Vanilla (1540kJ) / Salted Caramel (1470kJ)

/ Strawberry (1550kJ) / or Banana (1290kJ)

Make it a THICKSHAKE (1290kJ) +2.5

^{DF} dairy free • The average adult daily energy intake is 8700kJ

• Sorry, we can't remove or swap ingredients • 15% public holiday surcharge