

BRUNCH

TOAST WITH BUTTER AND CONDIMENTS

Sourdough (856kJ)	7
Soy Linseed (1419kJ)	7
Gluten Free (856kJ)	8
Fruit Loaf with Honey (2010kJ)	8

Served with strawberry jam (150kJ) / peanut butter (273kJ) / Vegemite (35kJ) / **Add extra condiment +1**

EGGS AS YOU LIKE ^v ^{GFOR} 14

Served on sourdough toast (see extras)
Poached (1540kJ) / Scrambled (2000kJ) / Fried (2090kJ)

BREKKIE BURGER 17

Bacon, fried egg, hash brown, lettuce, homemade tomato relish, tomato and aioli on a soft milk bun (2790kJ)

Swap bacon to grilled halloumi cheese upon request (2740kJ)

Add cheese (+276kJ) +1 / Add avocado (+994kJ) +2 /

Wrap option available

EGG SALAD TOAST ^{CHEF'S PICK} 19

Cultured smoked umami spread, Japanese style egg salad, roe, chives on a toasted Shokupan (2940kJ)

ULTIMATE BREAKFAST WRAP 21

Grilled pork chorizo patty, scrambled eggs, hash brown, lettuce, pickles, tomato salsa, spicy pineapple jalapeno relish, aioli, mozzarella cheese, wrapped in a spinach tortilla (3380kJ)

CHEESY BACON OMELETTE 22

Roasted mushroom, cherry tomato, baby spinach, grilled bacon, mozzarella cheese, parsley, toasted focaccia (2340kJ)

Vegetarian option available

TURKISH EGGS 22

Grilled pork chorizo, slow roasted cherry tomato, poached eggs, lemon & dill labneh, Aleppo butter, toasted focaccia (3530kJ)

CRUSHED AVOCADO ON TOAST ^v 23

Slow roasted cherry tomato, parsley, whipped Persian fetta, homemade chilli oil, pickled eschalots, poached eggs, toasted sourdough (2330kJ)

TEMPURA CORN FRITTERS ^v 24

Crispy tempura corn fritters, crushed avocado, tomato salsa, tomato relish, whipped Persian fetta, poached egg, soft herbs, parmesan snow (2840kJ)

MUSHROOM SCRAMBLED EGGS ON TOAST ^v 24

Sauteed mixed mushroom, asparagus, whipped Persian fetta, caramelised onion & mushroom relish, parmesan snow and shiitake mushroom XO on a toasted sourdough (3540kJ)

BREAKFAST GNOCCHI ^{CHEF'S PICK} 26

Homemade potato gnocchi, roasted tomato, pork chorizo, chilli, parsley, parmesan snow, poached egg (2810kJ)

Swap the chorizo for chicken (2530kJ)

EGGS BENEDICT 26

Poached eggs, crushed avo, sauteed spinach, hollandaise, toasted sourdough crumpet, fine herbs

Choice of Salmon (2630kJ) / Bacon (3370kJ) / Halloumi ^v (3260kJ)

LEAF BREKKIE ^v 26

Two poached eggs, grilled halloumi, hash browns, mushrooms, Sauteed spinach, crushed avocado and roasted tomato with toasted sourdough (3530kJ)

BIG BREAKFAST 28

Two eggs your way, cultured smoked umami spread, grilled pork chorizo, bacon, hash browns, smoked umami potato croquettes, roasted mushrooms served with toasted sourdough

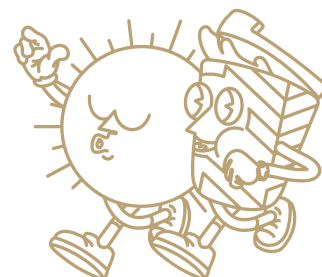
Poached (4340kJ) / Scrambled (4440kJ) / Fried (4470kJ)

EXTRAS

AIOLI SAUCE (414KJ) / CHILLI OIL (287KJ)	1
HOLLANDAISE SAUCE (414KJ) / HASH BROWN (553KJ)	3
POACHED EGG (345KJ) / CULTURED SMOKED UMAMI SPREAD (540KJ) ^{CHEF'S PICK}	3.5
SAUTEED SPINACH (251KJ) / HAM (453KJ) / MUSHROOMS (160KJ) / AVOCADO (994KJ) / SMOKED UMAMI POTATO CROQUETTES - 2 PCS (590KJ) ^{CHEF'S PICK}	4
GRILLED BACON (1310KJ) / PORK CHORIZO (1310KJ) / GRILLED HALLOUMI (722KJ)	6
GRILLED CHICKEN (718KJ) / SCRAMBLED EGGS (734KJ) / SMOKED SALMON (561KJ)	7
POTATO CHIPS (1192KJ)	9
SWEET POTATO CHIPS (809KJ)	12

THE AVERAGE ADULT DAILY ENERGY INTAKE IS 8700KJ

LEAF CAFÉ & CO



SANDWICHES, BURGER AND MORE

TOASTIES

Cheese & Tomato V (1830kJ)	10
Ham & Cheese (2010kJ)	11
Ham Cheese & Tomato (2060kJ)	13
Grilled Chicken, Cheese & Avocado (3110kJ)	16

CHEESE MELTS

Mushroom & Tomato V (1560kJ)	14
Ham & Pineapple (1920kJ)	15
Chicken & Avocado (2580kJ)	16

B.L.A.T. ^{GFOR}

Bacon, lettuce, crushed avocado, tomato and homemade sweet chilli mayo, served on toasted focaccia (3530kJ)	19
Swap bacon with halloumi V (3440kJ)	

GRILLED HALLOUMI WRAP ^V

Roasted pumpkin, avocado, crispy chickpeas, raisins, tomato salsa, eggplant, coriander, grilled halloumi, shredded lettuce, aioli in a spinach wrap (2100kJ)	20
Add chips (+715kJ) +4	

CHICKEN SCHNITZEL WRAP

Panko crumbed chicken breast fillet, English cheddar cheese, lettuce, avocado, tomato, and sweet chilli mayo in a spinach wrap (3240kJ)	20
Add chips (+715kJ) +4	

GRILLED CHICKEN & MUSHROOM TOASTIE

Grilled chicken breast, English cheddar cheese, chives, truffle mayo, and caramelised onion & mushroom relish on toasted focaccia (3510kJ)	21
--	----

WAGYU BEEF MENCHI KATSU SANDO ^{CHEF'S PICK}

Homemade wagyu beef menchi katsu, pickle, shredded lettuce, Kewpie mayo, tonkatsu sauce on a toasted Shokupan bread (3810kJ)	26
Add chips (+715kJ) +4	

GRILLED BEEF CHEESEBURGER

Homemade beef patty, homemade tomato relish, lettuce, tomato, pickle, melted cheddar cheese, grilled bacon and special burger sauce served on a milk bun, with a side of chips (6140kJ)	25
---	----

SALAD, MAINS AND DESSERT

SUPERFOOD SALAD ^{V GFOR}

Corn, avocado, onion, chilli, tomato, crispy chickpeas, kale, edamame, cous cous, roasted pumpkin, toasted seeds, honey mustard dressing (2060kJ)	22
---	----

FISH & CHIPS

Crispy battered flathead fillets, chips, house salad, lemon and tartar sauce (3330kJ)	22
---	----

CHICKEN SCHNITZEL

Panko crumbed chicken breast fillet, house salad, chips, creamy mushroom sauce (3780kJ)	23
Make it Parmi add +4 (Topped with napolitana sauce, ham, and mozzarella)	

BERRIES & NUTS PANCAKE ^{V GFOR} ^{CHEF'S PICK}

Seasonal berries, vanilla ice cream, mixed caramelised nuts, toasted coconut, whipped vanilla mascarpone and genuine maple syrup (3700kJ)	22
Add extra ice cream (+645kJ) +3	

FOR THE LITTLE ONES

 available for 12 and under 😊

KID'S BREKKIE

Scrambled egg, hash brown and toast (1590kJ)	12
--	----

KID'S CHICKEN NUGGETS

With chips and tomato sauce (2650kJ)	12
--------------------------------------	----

KID'S PIKELETS

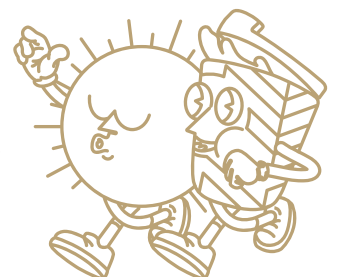
With seasonal fruits and ice cream (2160kJ)	12
---	----

KID'S CHEESEBURGER

Grilled beef patty, cheese, BBQ sauce and chips (4550kJ)	16
--	----

THE AVERAGE ADULT DAILY ENERGY INTAKE IS 8700KJ

LEAF CAFÉ & CO



BREW BAR

ESPRESSO | UPSIZE +0.8

Ristretto (2kJ) / Short Black (2kJ)	4.5
Long Black (4kJ) / Macchiato (61kJ) / Piccolo (197kJ) / Flat White (451kJ) / Latte (541kJ) / Cappuccino (451kJ)	5.0

SPECIALTY | UPSIZE +0.8 5.2

Chai Latte (910kJ) / Green Tea Latte (929kJ)

BELGIAN HOT CHOCOLATE | UPSIZE +1.5 6.2

We use Belgian couverture chocolate, high-quality chocolate that contains a higher percentage of cocoa.

White (979kJ) / Milk (1250kJ) / Dark (1080kJ)

MOCHA | UPSIZE +1.5 6.2

We use Belgian couverture chocolate, high-quality chocolate that contains a higher percentage of cocoa.

White (937kJ) / Milk (933kJ) / Dark (924kJ)

BABYCINO (133kJ) 2

EXTRAS

Decaf (2kJ) / Extra Shot (2kJ)	+0.6
Almond Milk (231kJ) / Soy Milk (361kJ) / Oat Milk (413kJ) / Lactose Free Milk (534kJ)	+0.8
FLAVOUR Caramel (270kJ) / Hazelnut (274kJ) / Vanilla (274kJ) / Mint (280kJ)	+0.8

ORGANIC LOOSE LEAF TEA 5.2

Temperature controlled, brewed to perfection.

GOOD MORNING

Our luxurious take on English Breakfast Tea (2kJ)

EARL GREY BLUEFLOWER

Ceylon Orange Pekoe Black Tea infused with bergamot (2kJ)

GENMAICHA (KYOTO JAPAN)

Brothy Kyoto Green Tea with toasted rice (2kJ)

SILVER JASMINE (ZHEJIANG)

Silver Tipped Green Tea, infused with jasmine blossoms (2kJ)

DOUBLE MINT

Mint & spearmint, lavender and fennel seeds to aid digestion (2kJ)

LEMONGRASS GINGER

Lemongrass and ginger blend to restore minerals (2kJ)

CHAMOMILE LAVENDER

A floral bouquet with sweet honey notes that soothe (2kJ)

MASALA CHAI

Authentic Indian recipe of spices with Assam Tea base & honey (465kJ)

CHILLED BAR

ICED ESPRESSO

Iced Long Black (4kJ) / Iced Latte (1050kJ)	6.6
Iced Coffee (1450kJ)	7.6
Affogato (729kJ)	7

BLENDED 8.8

Coffee (1700kJ) / Chai Latte (910kJ) / Green Tea Latte (908kJ)

BLENDED CHOCOLATE 10

White (3020kJ) / Milk (2957kJ) / Dark (2900kJ)

BLENDED MOCHA 10

White (2110kJ) / Milk (2100kJ) / Dark (2080kJ)

HANDCRAFTED SODA 7

New Zealand Golden Kiwi & Mint (860kJ) / Lychee (712kJ) / Cranberry & Lime (759kJ)

KOMBUCHA & ORGANIC ICED TEA | 350ML

RUBY KOMBUCHA 7

Grapefruit and hibiscus (105kJ)

ZEST KOMBUCHA 7

Lemon and chrysanthemum (105kJ)

SUNNY MORNING 6.5

Ceylon Orange Pekoe Tea with fresh lemon juice & mint (428kJ)

HIBISCUS DAWN 6.5

Liquid Turkish delight (307kJ)

COLD PRESSED JUICE | 350ML 8

STRAIGHT OJ

Freshly pressed orange juice (420kJ)

CLEAN & GREEN

Apple, pear, spinach & kale (581kJ)

FRUITY SMOOTHIE 9

AÇAÍ ^{DF}

Açaí, guararana, banana (1525kJ)

PASSION TANGO ^{DF}

Pineapple, passionfruit, banana & mango (1330kJ)

SUMMER SUNSET ^{DF}

Pineapple, mango, strawberry & kiwi (1290kJ)

STRANANA

Strawberry, banana, milk & honey (1290kJ)

WATERMELON CRUSH ^{DF}

Watermelon (589kJ)

PROTEIN SHAKE | WITH ALMOND OR OAT MILK 11.5

THE ENERGISER | 29G PROTEIN

Kiwi, spinach, avo, pineapple, coconut, banana, chia seed

Almond (1881kJ) / Oat (2069kJ)

BERRY BOOST | 32G PROTEIN

Açaí, guararana, banana, chia seed

Almond (2322kJ) / Oat (2510kJ)

MILKSHAKE 7

Chocolate (1690kJ) / Vanilla (1540kJ) / Strawberry (1550kJ) / or Banana (1290kJ)

WHEY Protein (502kJ) +2.5 / Make it a THICKSHAKE (1290kJ) +2.5